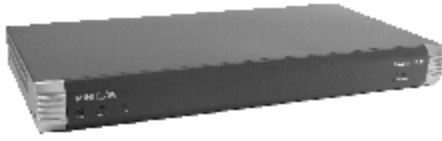


Smart 108 / 116 IP - Quick Start Guide



1. Introduction

To take advantage of the full range of features, we recommend you read the softcopy User Guide after performing the Quick Start procedure. It's in PDF format on the supplied CD or on our website www.minicom.com in the Support section.

All references throughout this guide to the Smart 116 IP refer equally to the Smart 108 IP. The two units are functionally the same. The Smart 116 IP has 16 Server ports and the Smart 108 IP has 8 Server ports.

The Smart 116 IP extends your KVM (keyboard, video, and mouse) from any computer or server over TCP/IP via LAN, WAN or Internet connection. Now you can control, monitor and manage up to 16 remote servers from wherever you are, inside or outside the organization. The Smart 116 IP is a cost-effective hardware solution, for secure remote KVM access & control of 16 computers/servers from the BIOS level - independent of the OS. One local analog or one remote digital IP user can access and control 16 multi-platform (PS/2, SUN, USB) servers.

Technical support - support@minicom.com

© 2009 Copyright Minicom Advanced Systems. All rights reserved.

5UM21166 V1 12/09

QUICK START GUIDE

Figure 2 illustrates the rear panel of the Smart 116 IP. The Smart 108 IP has 8 Server ports.

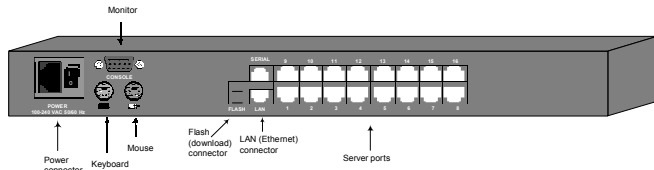


Figure 2 Smart 116 IP rear panel

4.2 Connector table

Connector	Function
Console KVM	(Optional) Connect a keyboard, video and mouse to operate the Smart 116 IP locally
Serial	This port is for future Serial functionality
Flash	To update firmware of the analogue part of the Smart 116 IP system - OSD, Switch, RICCs and RoCs.
LAN	Connect to 10/100 Mbit Ethernet. Green LED illuminates when unit is connected to a 100 Mbit/sec network. Yellow Led illuminates when unit is connected to a 10 Mbit/sec network.
Server ports	Connect to servers via RICC/ROCs

5. Pre-installation guidelines

- Place cables away from fluorescent lights, air conditioners, and machines that are likely to generate electrical noise
- Place the Smart 116 IP on a flat, clean and dry surface
- The Smart 116 IP is not intended for connection to exposed outdoor lines
- Ensure that the maximum distance between each computer and the Smart 116 IP, does not exceed 10m/33ft for RICCs and 30m/100ft for ROCs.

2. System components

The system consists of:

- 1 Smart 116 IP (p/n 0SU60005) or 1 Smart 108 IP (p/n 0SU70032)
- Rack mounting set (p/n 5AC20247)
- 1 RS232 Download cable (p/n 5CB40419)
- ROCs - PS/2, USB. (Ordered separately). CAT5 cables (1.5m provided)

3. Compatibility

The Smart 116 IP is compatible with:

- PS/2, SUN and USB computers/servers
- VGA, SVGA, or XGA monitors
- Windows, Linux, UNIX and other major operating systems

4. The Smart 116 IP unit

Figure 1 illustrates the front panel of the Smart 116 IP.



Figure 1 Smart 116 IP front panel

4.1 LED and button table

LED	Function
Power	Power Indicator
Remote	Illuminates when remote session is active
Link	Unit is connected to the network
Button	Function
Local	When pressed, Smart 116 IP disconnects the Client remote session and the local mouse and keyboard become operational. The Remote LED turns off.
Reset	Press and hold for more than 7 seconds to reset the Smart 116 IP unit

SMART 108 / 116 IP

6. Connecting the system

Figure 3 illustrates the Smart 116 IP system overview.

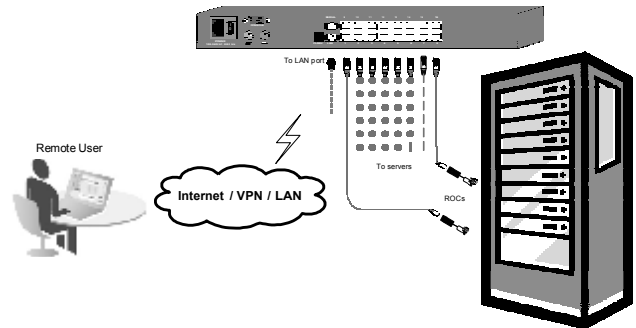


Figure 3 Smart 116 IP system overview

6.1 The ROCs

Each computer/server is directly connected to the Smart 116 IP via the appropriate ROC using CAT5 cable in a star configuration. No external power is needed at the remote ROCs. The ROCs draw their power from the computer's keyboard port (ROC PS/2) or from the USB port (ROC USB).

6.1.1 Connecting a ROC PS/2

You can connect the ROC PS/2 to a powered on computer, but it must be in the following order. Failure to connect in this order while the server is running, may lead to the mouse malfunctioning until the server is rebooted.

1. Connect the Mouse connector to the computer's Mouse port.
2. Connect the Keyboard connector to the computer's Keyboard port.
3. Connect the Screen connector to the computer's Video port.

6.1.2 Connecting a ROC USB

The ROC USB supports Windows 98 SE and later, MAC, SUN and SGI, and all modern Linux distributions.

To connect the ROC USB:

1. Connect the Screen connector to the computer's Video port.
2. Connect the USB connector to the computer's USB port.

6.2 Connecting to the network

Connect the network cable to the LAN port of the Smart 116 IP. This must be done before powering on the Smart 116 IP.

6.3 Connecting the CAT5 cables

1. Connect one connector to the RICC/ROCs RJ45 port.
2. Connect the other connector to one of the Smart 116 IP's Computer ports.
3. Follow the above 2 steps for each computer.

6.4 Connecting the power supply

1. Using the Power cord provided, connect the Smart 116 IP to a socket outlet with grounding connection. Only use the power cord supplied with the unit.
2. Switch on the Smart 116 IP.

7. Initial settings - Default IP address

The following sections provide instructions for setting the IP address for the Smart 116 IP unit.

By default, Smart 116 IP boots with an automatically assigned IP address from a DHCP (Dynamic Host Configuration Protocol) server on the network. The DHCP server provides a valid IP address, gateway address and subnet mask.

To identify the IP address, the Smart 116 IP MAC address appears on the underside of the Smart 116 IP box. The device number (D.N.) can also be found there.

If no DHCP server is found on the network, Smart 116 IP boots with the static IP address:192.168.0.155.

Note! If a DHCP server later becomes available, the unit picks up the IP settings from DHCP server. To keep the static IP address, disable DHCP – explained in the softcopy User Guide.

7.1 Static IP addresses for a number of units

Where you want to connect more than 1 Smart 116 IP to the same network and there is no DHCP server, or you want to use static IP addresses, do the following:

Connect the Smart 116 IP units one at a time and change the static IP address of each unit before connecting the next unit.

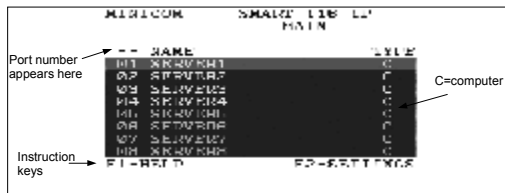


Figure 5 OSD Main window

9.1 Navigating the OSD

To navigate up and down use the Up and Down arrow keys.

To jump from one column to the next (when relevant) use the Tab key.

To exit the OSD or return to a previous window within the OSD press **Esc**.

9.2 Selecting a computer

To select a computer:

1. Navigate to the desired computer line.
Or, type the port number of the desired computer.
2. Press **Enter**. The selected computer is accessed. A Confirmation label appears showing which computer is accessed.

Note! When the OSD is displayed you cannot select computers using the keyboard hotkeys.

10. Starting a remote session

At a Client computer open the web browser and type the Smart 116 IP's IP address. <https://IP address>. The Login page appears. Type your username and password and press Enter. By default, the user name is: **admin** and the password is **access**, (both lower case).

Note! There is a shortcut to the Configuration pages from the login page. Click the arrow to toggle between the option to access a remote session or the configuration pages.

On first connection install the Minicom certificate and ActiveX control. You must login as an Administrator to your computer to install the ActiveX control. Once the ActiveX control is installed, all types of users can login.

When using a Firefox browser, install the Minicom Firefox add-on.

8. Logging into the Web interface

Client computer operating system. - Windows 2000 or higher, with Firefox 3 or Internet Explorer 7.0 or later version. Linux with Firefox 3.

Complete the initial setup via the Web configuration interface:

1. Open your Web browser and type the Smart 116 IP system IP address - <https://IP address/> - and press **Enter**. The login page appears.
2. In **mode** select Configuration.
3. Type the default Administrator user name **admin** and password **access** (both lower case).
4. Press **Enter**. The Web interface opens at the Network Configuration page, see Figure 4.

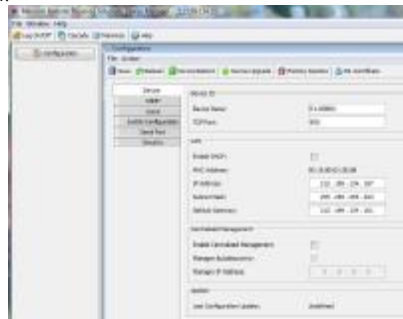


Figure 4 Smart 116 IP Web interface

9. The OSD

To display the OSD:

1. Ensure there is no remote user connected. To disconnect the remote user press the **Local** button on the Smart 116 IP.
2. Press **Shift** twice. The OSD Main window appears. See Figure 5. Lines with yellow text show active computers. Lines with blue text show inactive computers. The Type column indicates a computer "C" is connected to the port.

The screen of the currently selected Target Server with Minicom toolbar appears see Figure 6.



Figure 6 Remote console window

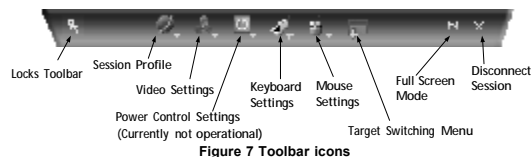


Figure 7 Toolbar icons

10.1 Switching to a different server/device

To connect to a different server/device:

1. From the Toolbar, click . A list of connected servers/devices appears.
2. Click the desired server. The screen of the server appears.

To complete the initial setup and log into the web interface please see the softcopy User Guide on the supplied CD or on our website www.minicom.com in the Support section.