

IP Addendum

Direct Connection Feature

For MX IP

Insert this addendum after section 61 on page 47 of the MX IP Operating Guide

For Smart CAT5 Switch 16 IP

Insert this addendum after section 61 on page 46 of the Smart CAT5 Switch 16 IP Operating Guide

For Smart IP Extender

Insert this addendum after section 81 on page 59 of the Smart IP Extender User Guide

International HQ

Jerusalem, Israel

Tel: + 972 2 535 9666

minicom@minicom.com

North American HQ

Linden, New Jersey

Tel: + 1 908 4862100

info.usa@minicom.com

European HQ

Dübendorf, Switzerland

Tel: + 41 1 823 8000

info.europe@minicom.com

Italy

Rome

Tel: + 39 06 8209 7902

info.italy@minicom.com

Customer support - support@minicom.com

www.minicom.com

Direct SmartIP Links

You can set up direct links to any Minicom IP hardware over a LAN or WAN. Use the links to directly connect to these IP units without having to remember their IP addresses. You can also see the status of the remote IP units as explained below.

All the IP units must have firmware that supports direct connection functionality. Ensure that firmware of all units is updated to the latest version. See the User Guide of each IP unit to update the firmware.

To set up the direct connections:

1. Scroll down the Maintenance window to Maintenance Features. See Figure 1

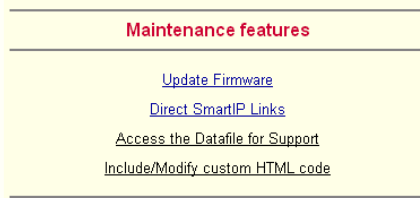


Figure 1 The Maintenance Features

2. Click Direct SmartIP Links. The Direct Connections Links page opens. See Figure 2.



Figure 2 The Direct Connections Links page

3. In the IP address column, type IP addresses of the other Minicom IP units. For up to 16 entries press .

4. In the Device Name column type a description.
5. Click Apply. On the Home page Monitor icons representing the direct connection IP units appear. See Figure 3.

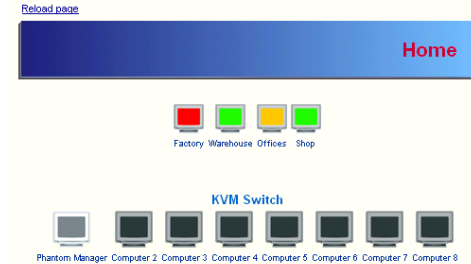


Figure 3 The Monitor icons

The icons are color coded as follows:

Icon	Meaning
 Gray	Powered off or disconnected from the network
 Green	Powered on but no user is logged in
 Orange	A user is logged in
 Red	User is working with the remote console

Note! If the state of one device changes, there may be a delay of some seconds until icon colors reflect the true situation especially where the network link of this device is going down.

To connect to an IP unit:

Click the desired icon on the Home page. The Login page of that IP unit appears.

Figure 4 below illustrates a direct connections link scenario.

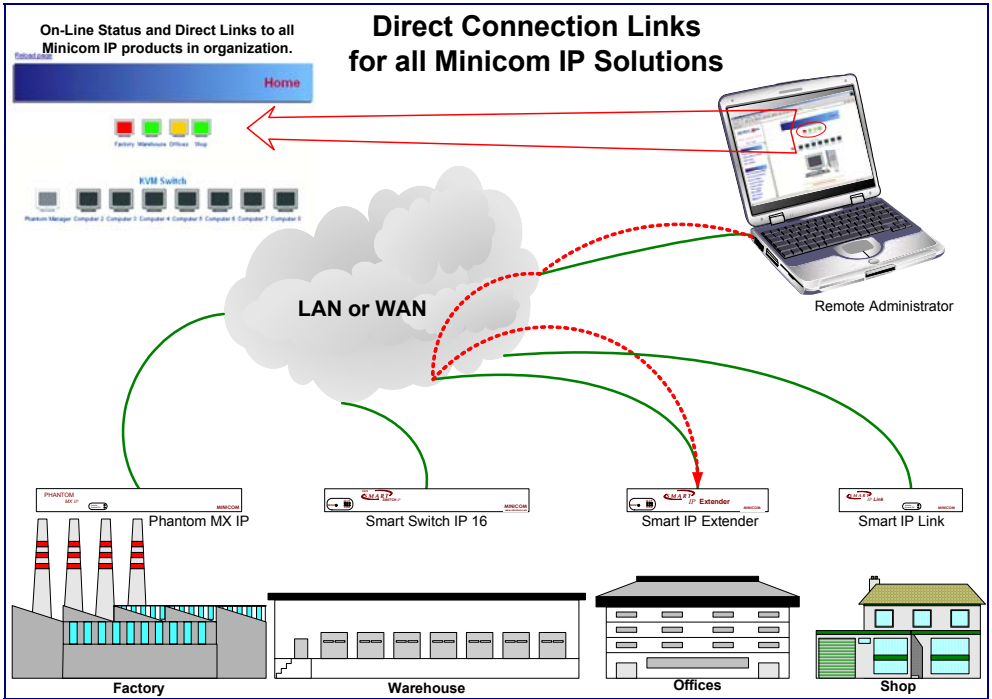


Figure 4 Direct connections link scenario