

Title: Modem connection to Smart IP Extender.

No: SIPE2-1

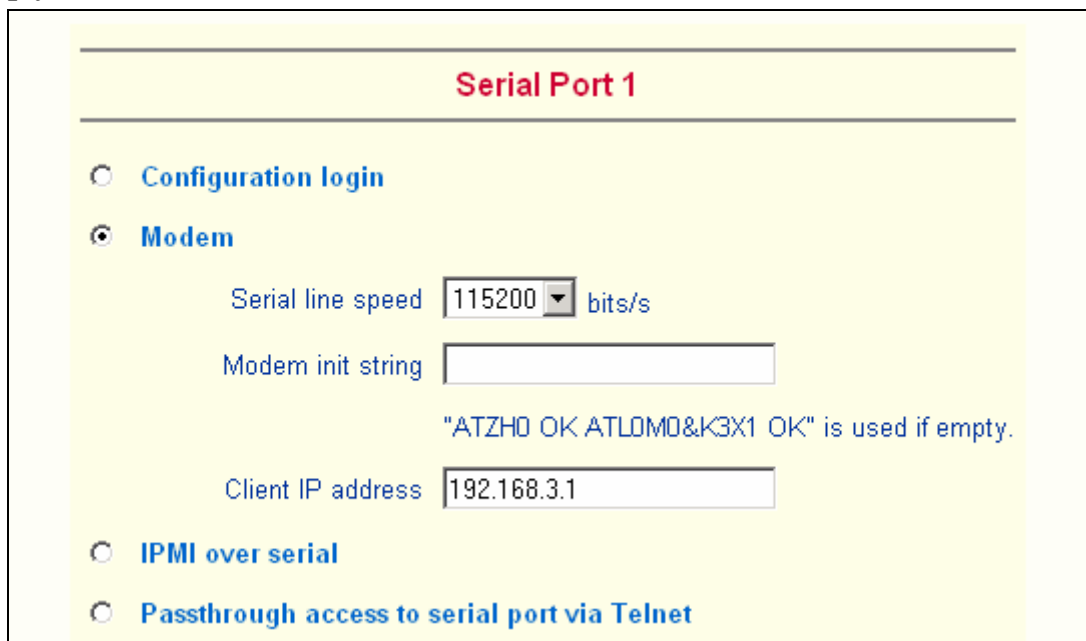
Date: Wednesday, 08 October, 2003

SUMMARY:

The Smart IP Extender, Phantom MXIP, Smart CAT5 Switch 16IP and Smart IP Link allow you to connect to the unit by using optional external modem. This connection is similar to dialing to ISP to connect to the Internet, because the Smart IP Extender will act as ISP and will provide your client computer with valid IP address.

MORE INFORMATION:

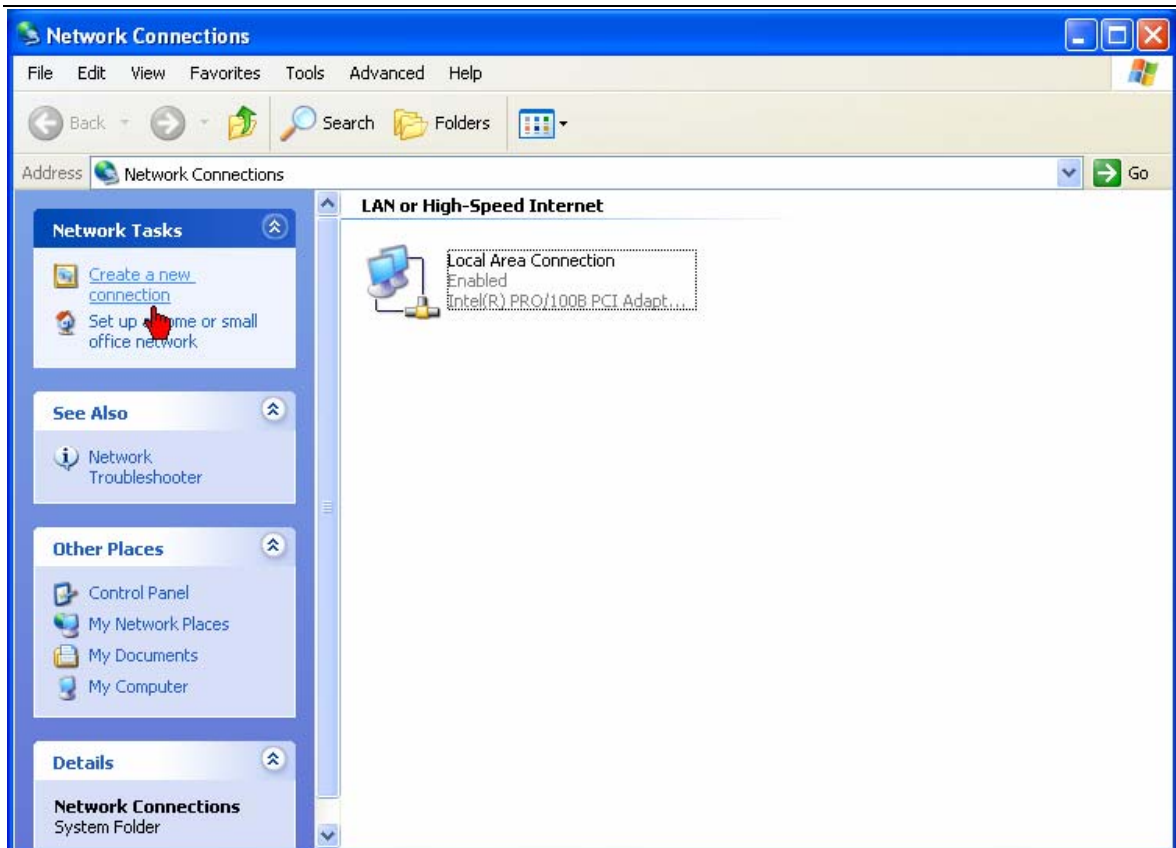
Before dialing to the Smart IP Extender you should configure it to work with external modem. To do this you should connect to the unit by the regular way through the local area network, navigate to the Serial Port Settings and select Modem. Note the *Client IP address* as this address will be assigned to your client computer. Input your modem Init string if it differs from default "ATZH0 OK ATL0M0&K3X1 OK" string. Don't forget to press **Apply** button.



The screenshot shows the 'Serial Port 1' configuration window. It has a yellow background and a red title bar. There are four radio button options: 'Configuration login', 'Modem' (which is selected), 'IPMI over serial', and 'Passthrough access to serial port via Telnet'. Under the 'Modem' option, there are three fields: 'Serial line speed' with a dropdown menu set to '115200' and 'bits/s', 'Modem init string' with an empty text box and a note below it stating '"ATZH0 OK ATL0M0&K3X1 OK" is used if empty.', and 'Client IP address' with a text box containing '192.168.3.1'.

Then you should set the *Transmission Encoding* to *Compressed Optimized to Modem V.90* in *Remote Console Settings*.

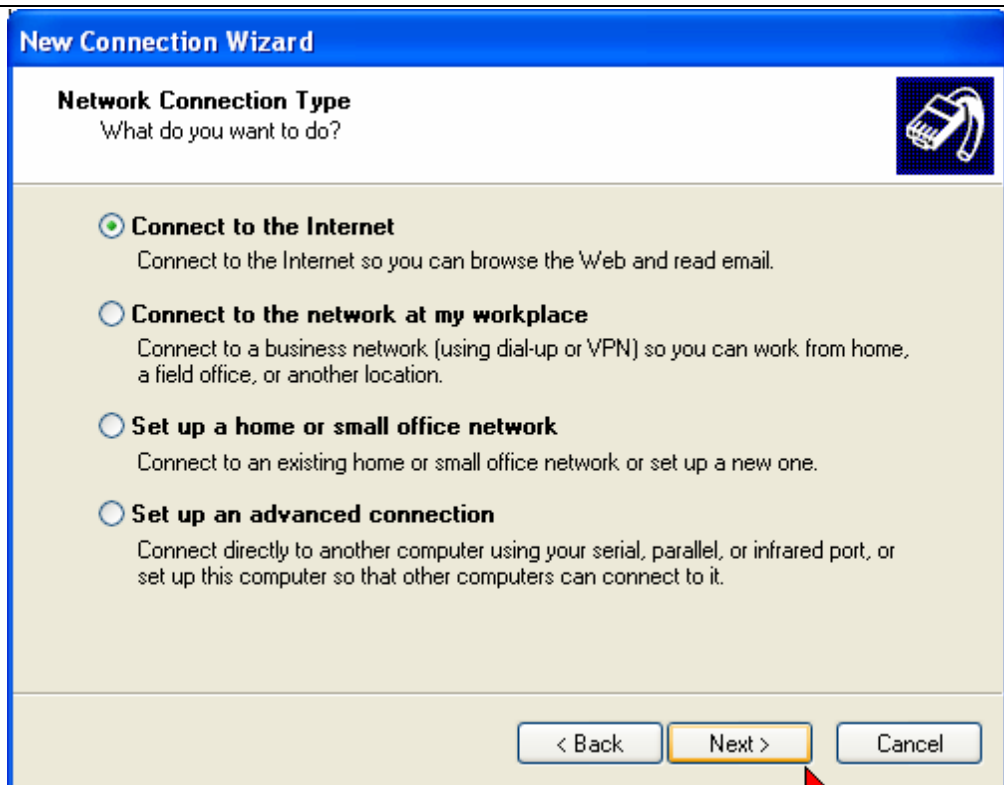
After you configured the Smart IP Extender to work with external modem you should configure your client computer to dial in to Smart IP Extender. To do this you should right-click the *My Network Places* icon on your Desktop and select *Properties*. The *Network Connections* window will appear:



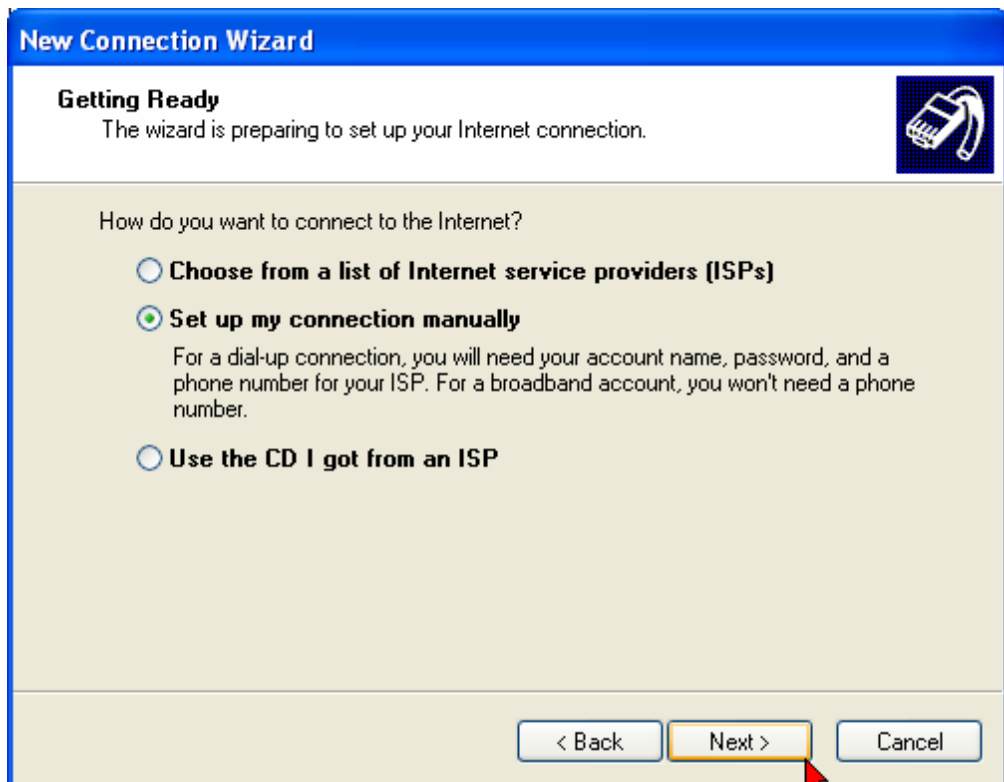
Select *Create a new connection* under Network Tasks section on the right pane.



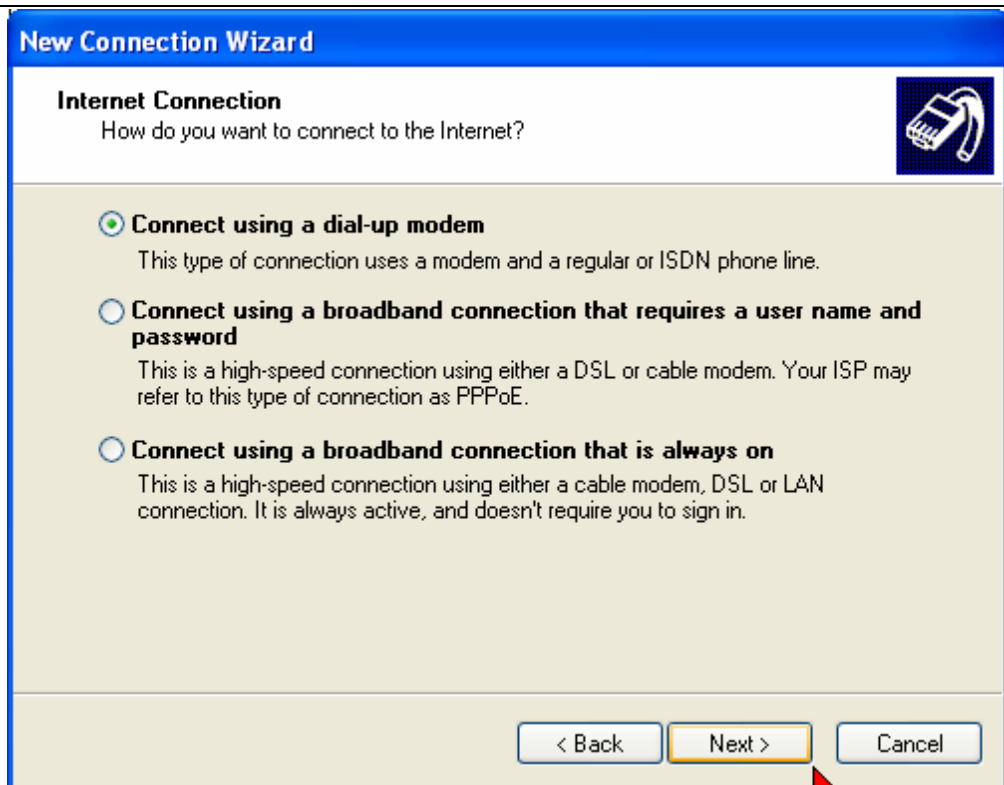
The *New Connection Wizard* will appear, click *Next*.



Select **Connect to the Internet** because the dialing in to the Smart IP Extender is similar to connecting to ISP. Click **Next**.



Select **Set up my connection manually** and click **Next**.



New Connection Wizard

Internet Connection
How do you want to connect to the Internet?

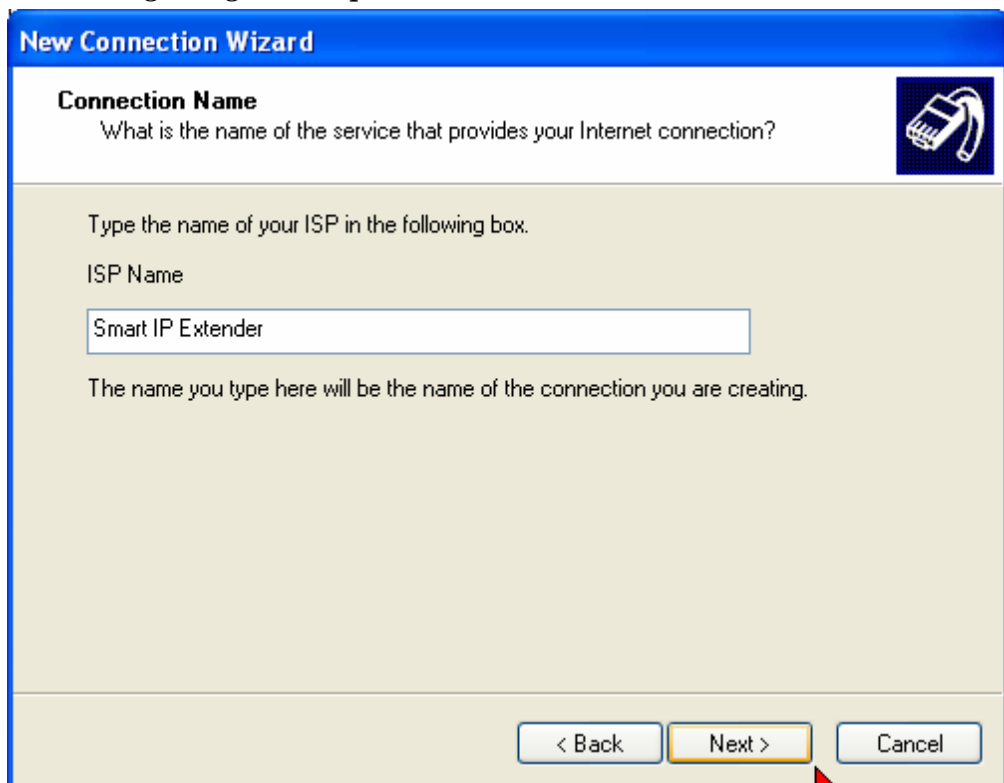
Connect using a dial-up modem
This type of connection uses a modem and a regular or ISDN phone line.

Connect using a broadband connection that requires a user name and password
This is a high-speed connection using either a DSL or cable modem. Your ISP may refer to this type of connection as PPPoE.

Connect using a broadband connection that is always on
This is a high-speed connection using either a cable modem, DSL or LAN connection. It is always active, and doesn't require you to sign in.

< Back Next > Cancel

Select *Connecting using a dial-up modem*. Click *Next*.



New Connection Wizard

Connection Name
What is the name of the service that provides your Internet connection?

Type the name of your ISP in the following box.

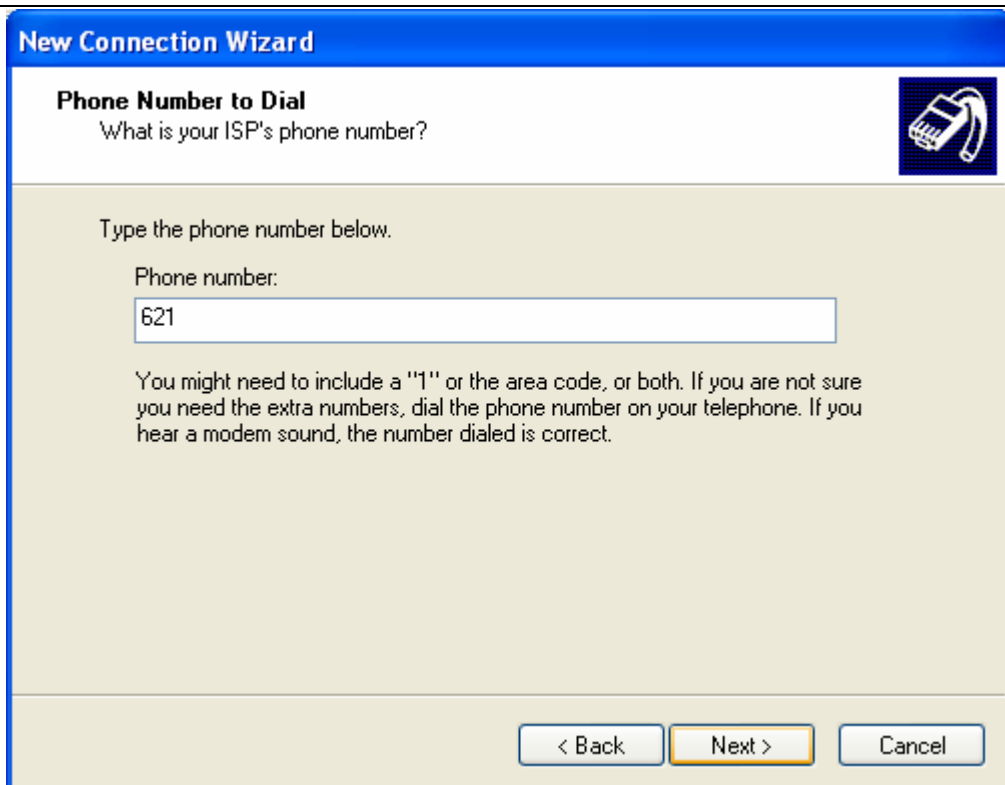
ISP Name

Smart IP Extender

The name you type here will be the name of the connection you are creating.

< Back Next > Cancel

Enter a meaningful name for this connection and click *Next*.



New Connection Wizard

Phone Number to Dial
What is your ISP's phone number?

Type the phone number below.

Phone number:
621

You might need to include a "1" or the area code, or both. If you are not sure you need the extra numbers, dial the phone number on your telephone. If you hear a modem sound, the number dialed is correct.

< Back Next > Cancel

Type the phone number you will dial to the Smart IP Extender and click *Next*.



New Connection Wizard

Internet Account Information
You will need an account name and password to sign in to your Internet account.

Type an ISP account name and password, then write down this information and store it in a safe place. (If you have forgotten an existing account name or password, contact your ISP.)

User name: super

Password: ●●●●

Confirm password: ●●●●

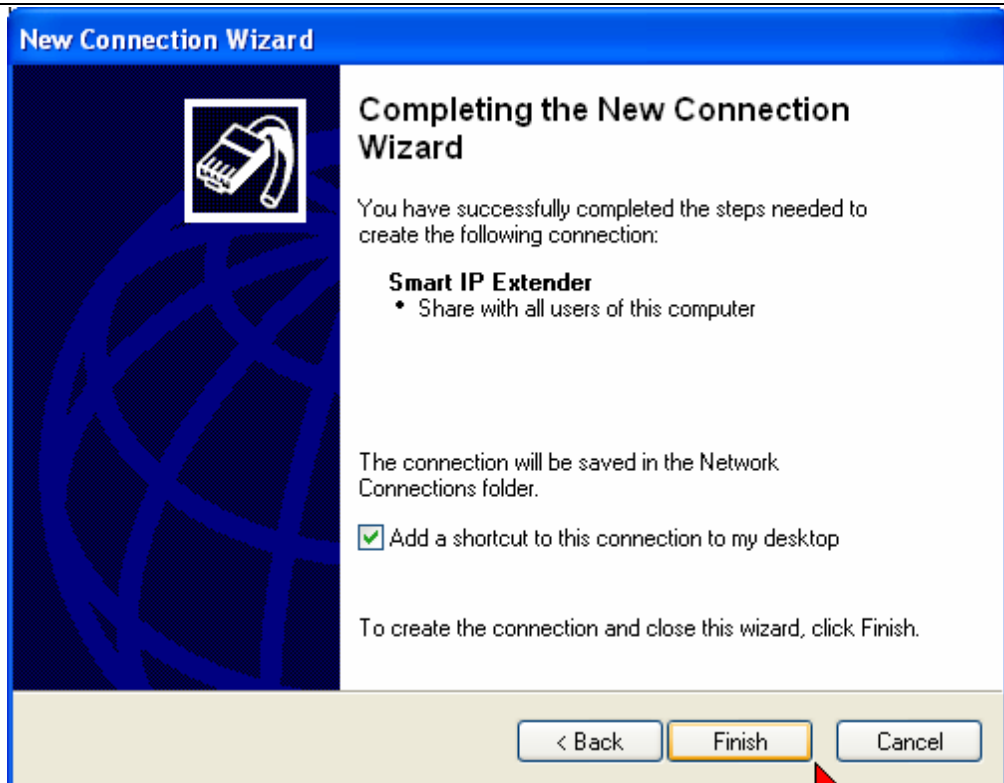
Use this account name and password when anyone connects to the Internet from this computer

Make this the default Internet connection

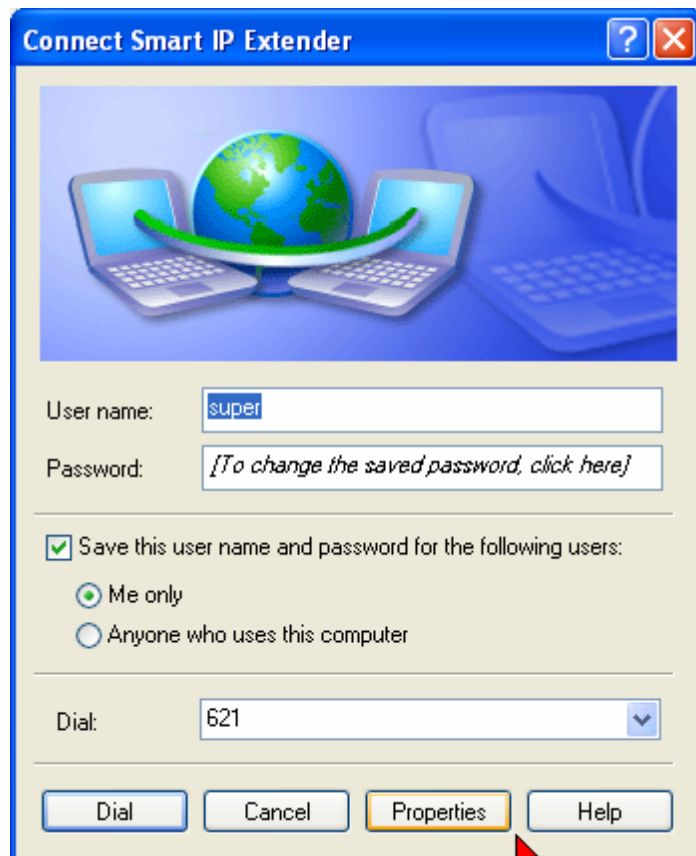
Turn on Internet Connection Firewall for this connection

< Back Next > Cancel

Enter the User name and Password. This user name and password must be the same user name and password that authenticate you in Smart IP Extender. The default user name is *super* and the password is *smart*. Retype the password in Confirm password field. Clear all check boxes and click *Next*.

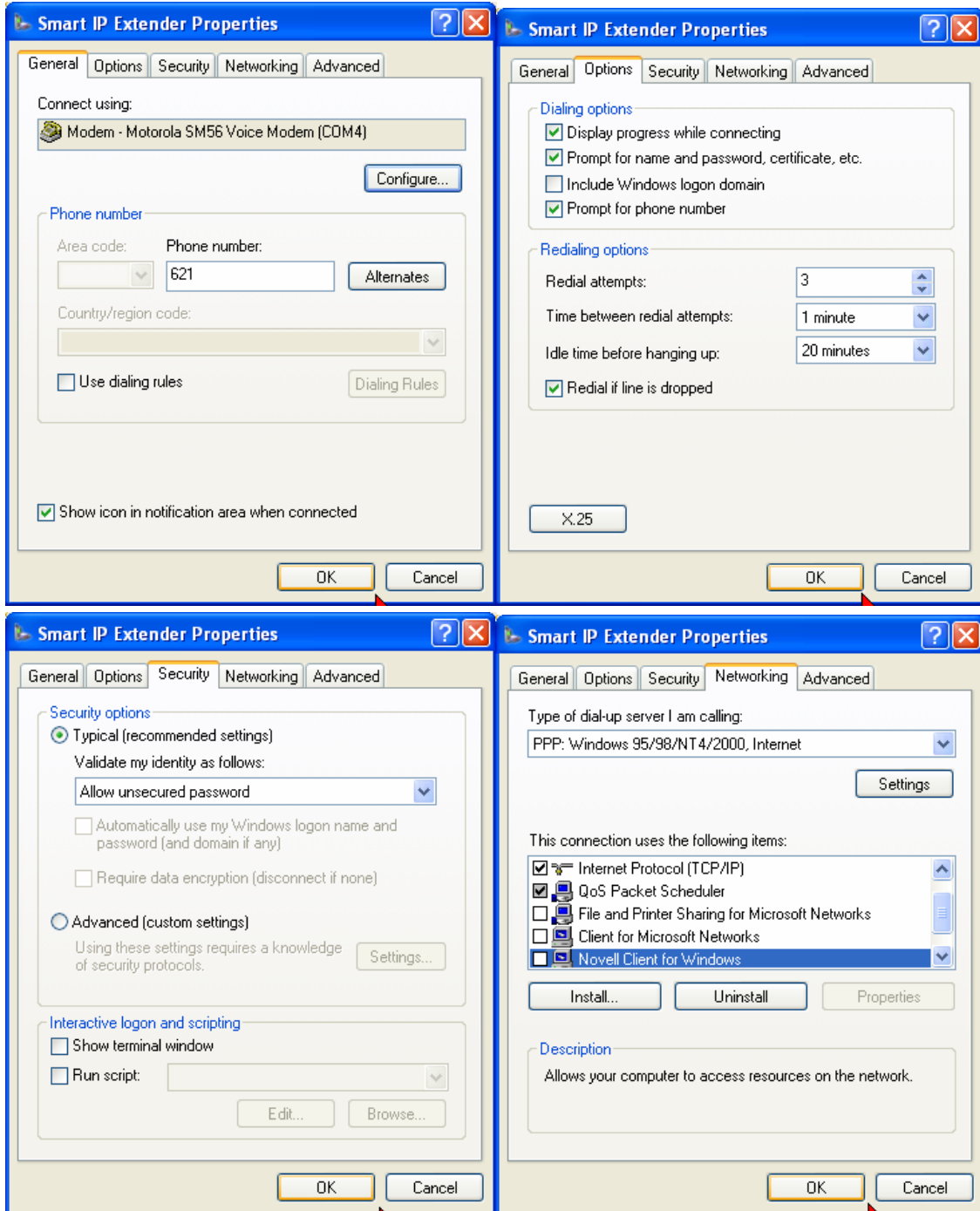


Check the *Add a shortcut to this connection to my desktop* checkbox for your convenience and click *Finish* to exit the Wizard.



Double click on the Connect to Smart IP Extender icon on your desktop and verify that correct user name, password and phone number appear in the corresponding fields. Select *Save this user name and password for the following users:* and select if you want to save them only for your account or for anyone using this client computer. In any case you will need to authenticate yourself again before using the Smart IP Extender.

Verify that all properties of this connection are similar to the shown on the following screenshots below:



Press **Dial** button to connect to the Smart IP Extender. Your modem will call to the above number and after short negotiation it will connect you to the Smart IP Extender and assign the following IP address to your computer: 192.168.3.1. This is the IP address that was configured in **Client IP Address** field on the **Serial Port Settings** page of the Smart IP Extender.

Open your Internet browser and point it to the IP address of the Smart IP Extender that was configured in **Network Settings** of the Smart IP Extender. The Login page of the Smart IP Extender will appear, login on to the Smart IP Extender using your user name and password. Now you may operate the Smart IP Extender in the same way when you were connected to it through the LAN or WAN.

COMMENTS:

- In some versions of the Smart IP Extender and Smart IP Link you should point your browser to *Server IP Address* which is defined in *Serial Port Settings* page of the unit.
- Setting the Dial Up connection may be different in other versions of Microsoft Windows and other Operating Systems. Please consult the user manual of these Operating Systems how to set the Dial Up connection to the Internet.
- Information in this Connectivity Information Sheet equally applies to Smart IP Extender, Smart CAT5 Switch 16 IP and Phantom MX IP.
- Configuration of Smart IP Link is slightly different and fully described in the Connectivity Information Sheet SIPE3-1