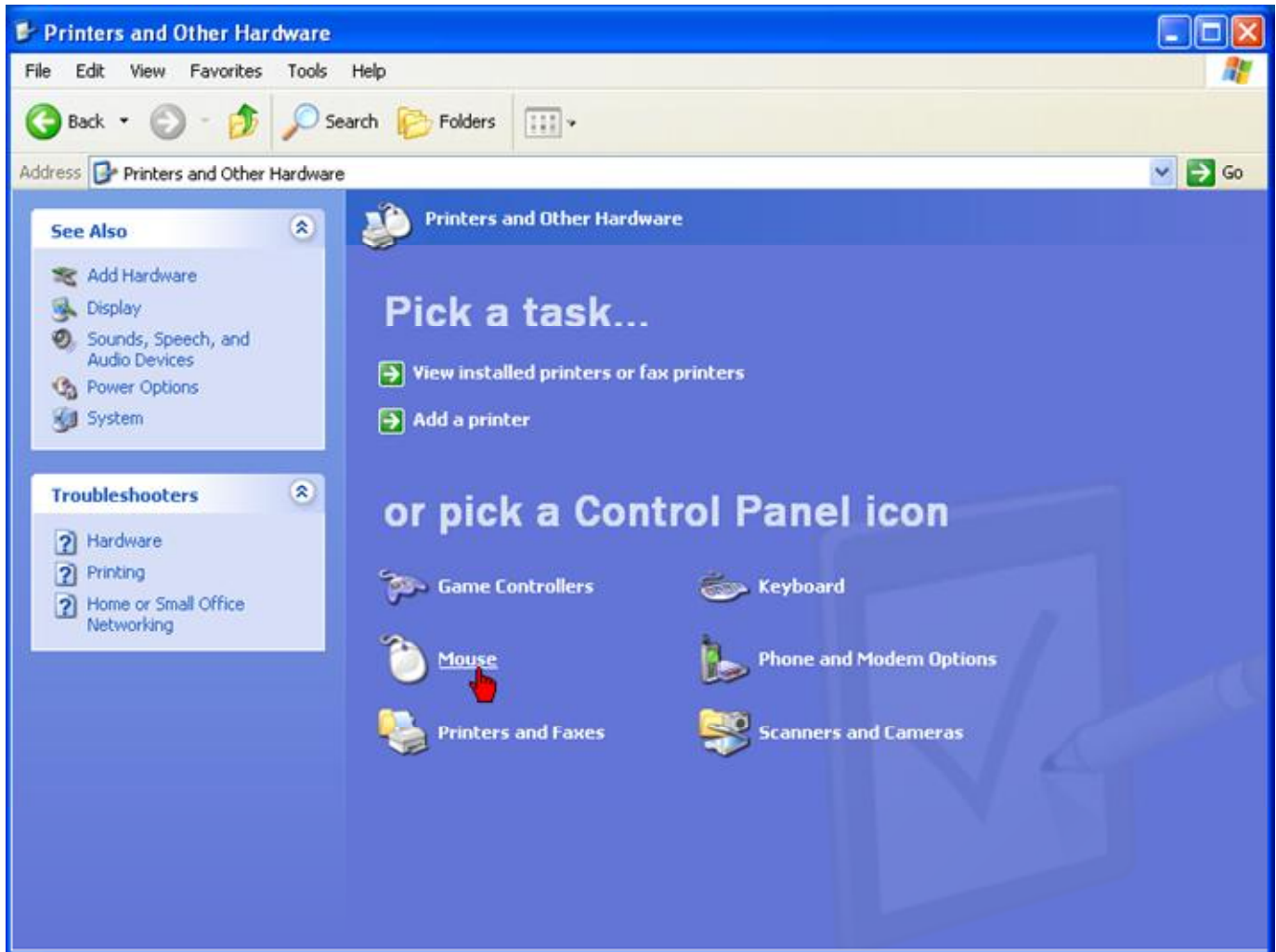
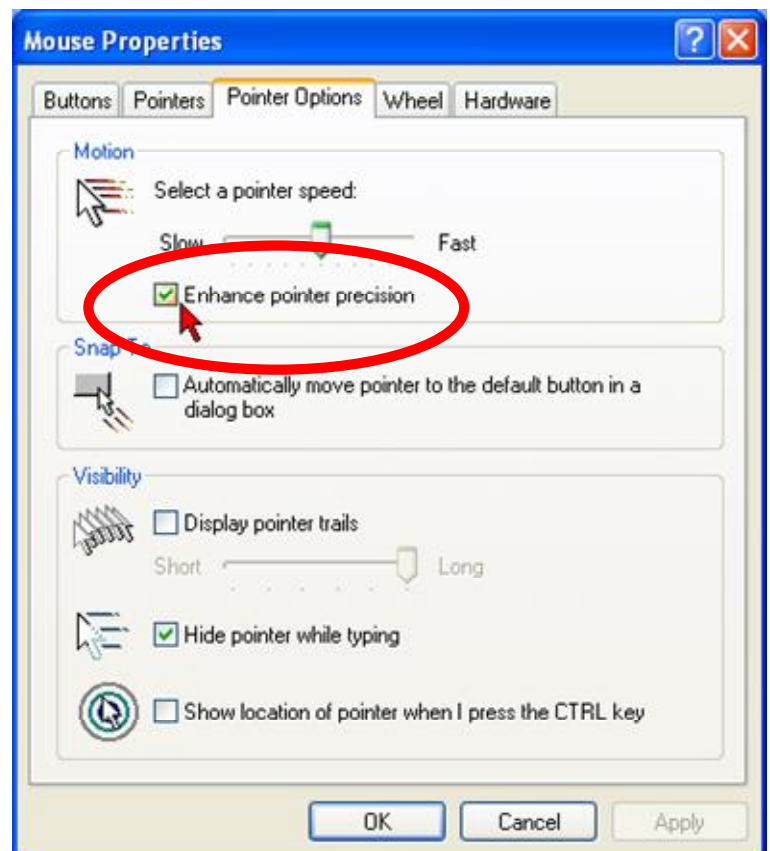


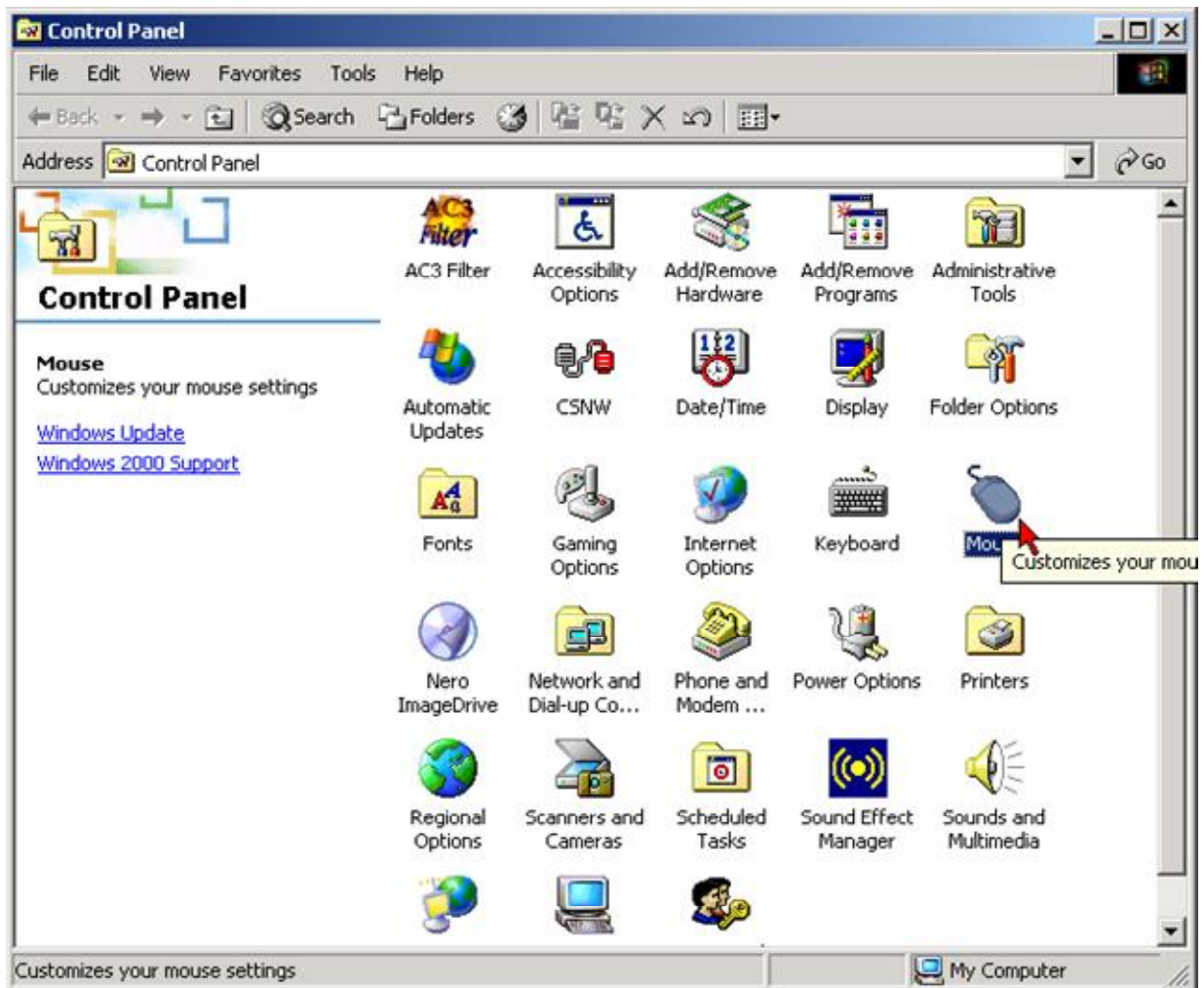
# How to disable mouse acceleration in Windows XP and Windows 2003 Server



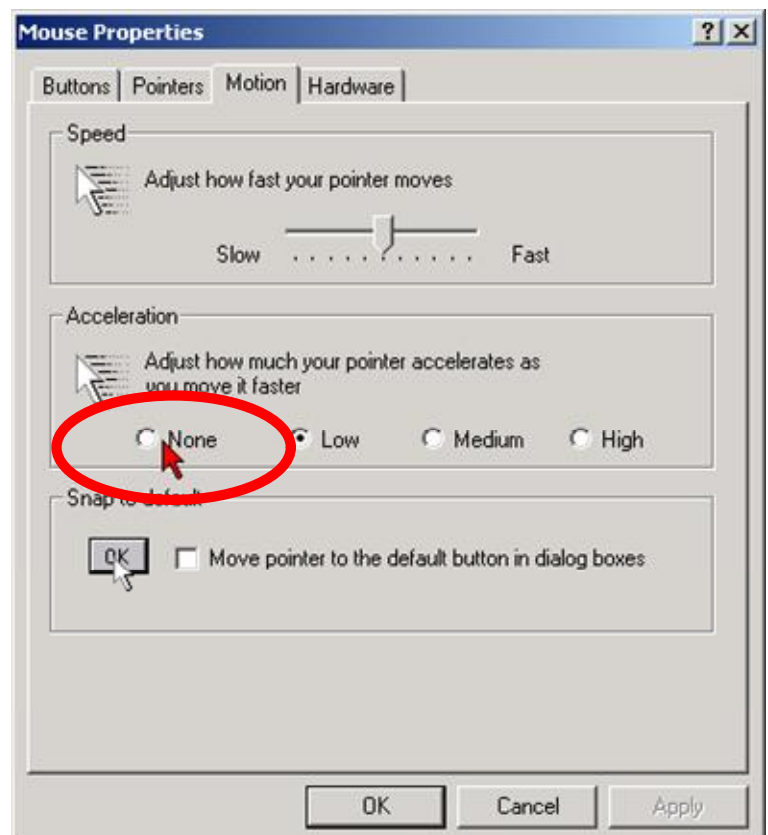
**Open the Mouse Properties in Control Panel of the Windows XP or Windows 2003 Server. Select the Pointer Options tab. Center the Select a pointer speed slider bar and unselect the Enhance pointer precision checkbox in Motion section. Press OK to save the settings.**



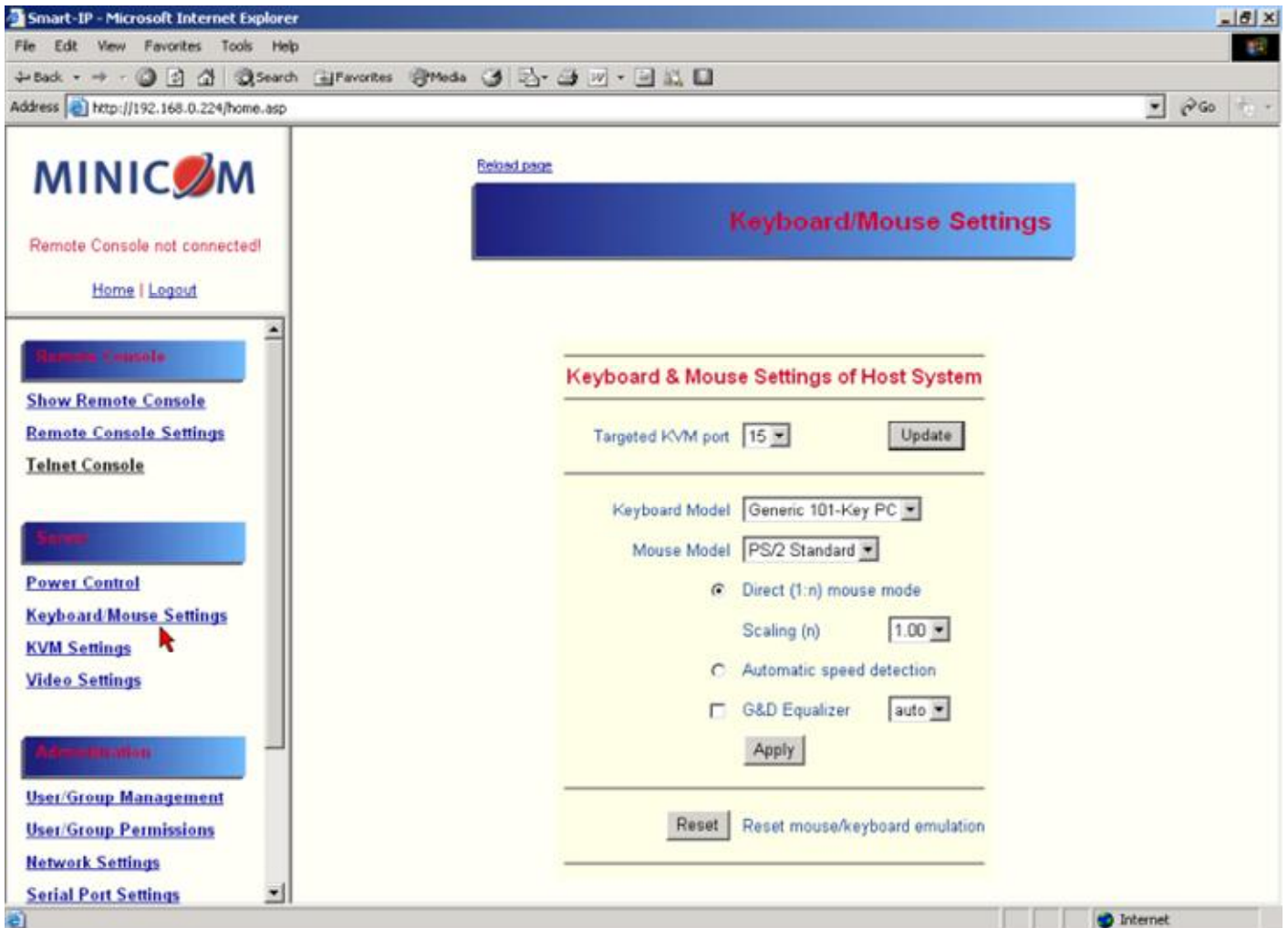
# How to disable mouse acceleration in Windows 2000 Pro and Windows 2000 Server



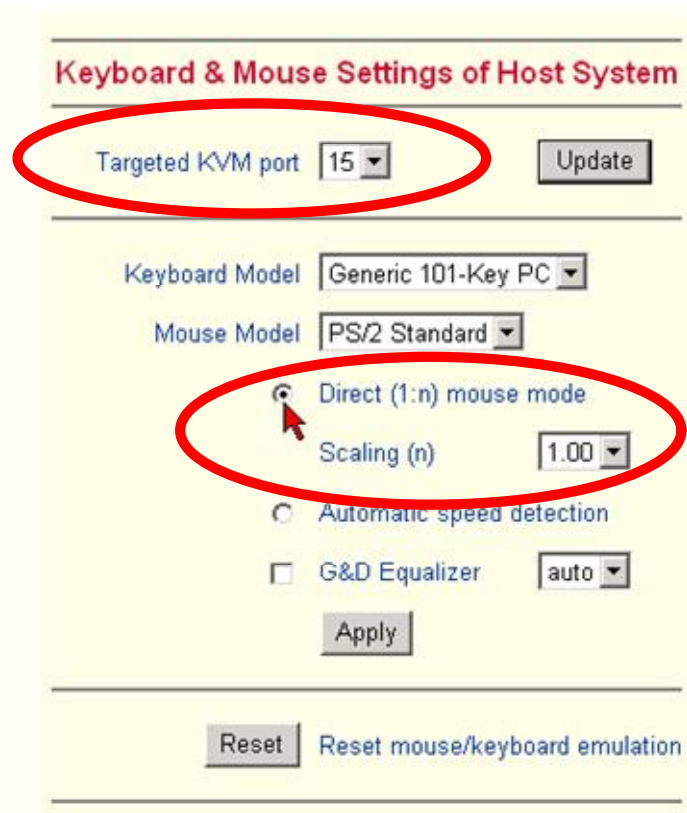
**Open the Mouse Properties in Control Panel of the Windows 2000 Professional or Windows 2000 Server. Select the Motion tab. Center the Speed slider bar and set the Acceleration to None in the Acceleration section. Press OK to save the settings.**



# Setting the Mouse mode to Direct 1:1 in Smart IP Extender, Smart Switch 16IP and Phantom MXIP



Select the Keyboard and Mouse Settings in the web interface page of the Smart IP Extender, Smart Switch IP or Phantom MXIP unit. If you configured the host computers to work without mouse acceleration, then you should select the Direct (1:n) mouse mode with Scaling (n) 1.00. Press Apply button to save the changes. Repeat this procedure for every KVM port where computer with non accelerated mouse is connected. You may select the Targeted KVM Port on the top of the Keyboard & Mouse Settings of Host System page.



## How to disable the mouse acceleration in some Operating Systems

The following steps describe how to disable mouse acceleration in some Operating Systems.

### To disable mouse acceleration on Windows XP:

1. From the Control Panel, click the Printers and Other Hardware option and then the Mouse icon.
2. From the Mouse Properties dialog box, click the Pointer Option tab.
3. Center the Motion pointer speed slider bar and deselect the Enhance Pointer Precision option.

### To disable mouse acceleration on Windows 2000:

1. From the Control Panel, click the Mouse icon.
2. From the Mouse Properties dialog box, click the Motion tab.
3. Center the Speed slider bar and set Acceleration to None.

### To disable mouse acceleration on Windows 98 ME:

1. From the Control Panel, click the *Mouse* icon.
2. From the Mouse Properties dialog box, click the *Pointer Options* tab.
3. Center the Pointer Speed slider bar
4. Click *Accelerate...* button.
5. Deselect *Pointer acceleration* option.

### To disable mouse acceleration on Windows 98 SE and Windows NT4:

1. From the Control Panel, click the Mouse icon.
2. From the Mouse Properties dialog box, click the Motion tab.
3. Set the Pointer speed slider bar completely to the left.

### To disable the mouse acceleration if Microsoft Intellimouse driver is installed on Windows 98, Windows ME, Windows NT4:

1. From the Control Panel, click the *Mouse* icon
2. From the Mouse Properties dialog box, click the *Pointer Option* tab
3. Center the Pointer Speed slider bar.
4. Click *Advanced...* button.
5. Deselect *Enable pointer acceleration* option

### To disable mouse acceleration on NetWare 6 servers running Java 1.4.1:

1. From the NetWare 6 Graphical User Interface (GUI) Environment tool Input tab, select Turn off mouse acceleration.
2. Click Apply and restart the GUI.

### To disable mouse acceleration on NetWare 6 servers running Java 1.3.1 CSP8 or CSP9:

1. Add the following command to the NetWare 6 sys:/java/nwgfx/xinitrc file:  
**xset m 1**
2. Save the file and restart the GUI.

### To disable mouse acceleration on Linux:

1. Execute the following command line parameter:  
**xset 0 255**
2. Or-  
**xset m 0**