



SmartRack KVM Drawer + and 116/116 IP Switch

For those who need the console and the switch together

- Combined KVM switch and rack console for ease of use
- Supports multiple platforms (PS/2, USB) and mixed server environments
- Occupies a mere 1U of rack space, adjustable to various rack depths
- Sophisticated control options with multi-layered security
- Plug-and-play installation
- 17" TFT LCD display

The SmartRack's are the most efficient and effective way to control and manage servers in a rack.

Local and Remote Access

The SmartRack series comes with either a 16 port KVM switch for local access or with a 16 port IP KVM switch for combined local and remote access.

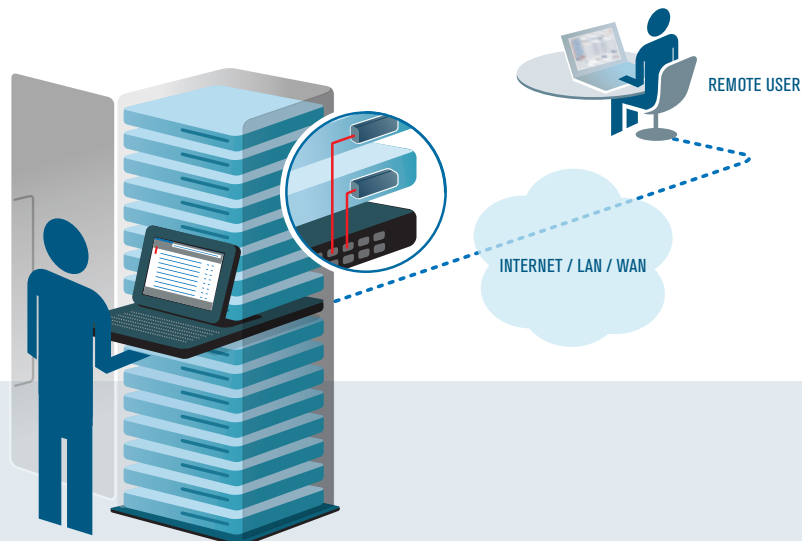
To access servers, just slide out the drawer and flip up its top to display the large, high resolution 17" TFT LCD display.

Control More Servers

Use the KVM switch to control up to 16 servers in multiple platforms (PS/2, USB). Minicom's KVM over CAT5 technology that directly connects the switch to each server in the room, eliminating cable clutter and providing up to 30m/100ft of distance between server and switch.

SmartRack 116 IP Key features

The SmartRack 116 IP extends your KVM from any computer or server over TCP/IP via LAN and WAN. Now you can control, monitor and manage up to 16 remote servers from wherever you are, inside or outside the organization. The SmartRack 116 IP offers seamless integration into Minicom's centralized management system - KVM.net II.



Technical Specifications

Display Size	17"
Number of Ports	16
Operating systems	Windows, Linux, Unix and all other major operating systems.
Multi Platform	Supports PS/2 and USB
System Cables	CAT5 FTP or UTP 2x4x24 AWG solid wire
Panel Type	Active Matrix TFT LCD
Resolution Capabilities	Maximum Resolution up to 1280X1024
Pixel Pitch	Supports 0.264mm
Viewing Angle	Right-Left view 60° - 70° Up-Down view 45° - 60°
Contrast Ratio	450:1
Brightness	White 250cd/m2
Back Light	Four Lamps
Supported Colors	16.7M Colors
Keyboard Mouse	106 key PS/2 keyboard with touchpad
Sync	45~80KHZ
Power Source	100-240 VAC input
Operating Temperature	0° - 40° degree C/32° -104°F
Storage Temperature	-20° - 40° degree C/-4° - 104°F
Humidity	10%~90%RH
Response Time	Rising time 2-6ms Delay time 14-24ms
Dimension	Standalone 470.1x447.5x44mm/18.5x17.6x1.7in 116 or 116IP Switches 640x447.5x44mm/25.1x17.6x1.7in
Rack depth	468.9 to 814mm/18.46x32.047in
Chassis Construction	Heavy duty steel materials
Computer to switch Distance	Up to 30m/100ft
Connection Types	System: 16 RJ45 Serial: RJ11

Ordering Information

Description	Order No.
SmartRack Drawer Standalone	OSU52088
SmartRack Drawer + 116 Switch	OSU52091
SmartRack Drawer + 116 IP Switch	OSU70050
ROC PS/2	OSU51078
ROC USB	OSU51079



SmartRack 116, back