

Title: Cascading DX User Unit to IP Access.

No: DX11-2

Date: Monday, 04 September, 2006

SUMMARY:

Cascading DX User unit to IP Access provides remote IP capability to Minicom Matrix DX system and allows full operation of Minicom DX system from anywhere in the world by using standard IP connection. To cascade DX User unit to IP Access, the DX User unit and IP Access should be configured in a certain way to ensure correct operation of the system.

MORE INFORMATION:

For utmost compatibility, the DX User unit must have firmware version 2.0 and higher and IP Access must have firmware version 2.0.8.38 and higher.

Connect IP Access Computer ports to DX User unit console ports by using supplied with IP Access 3-in-1 5CB40477 cable. Connect the DX User to the DX Central unit with CAT5 cable. Connect optional keyboard, mouse and monitor to IP Access Console ports. Switch on the DX User unit and IP Access and login onto DX system with administrator password.

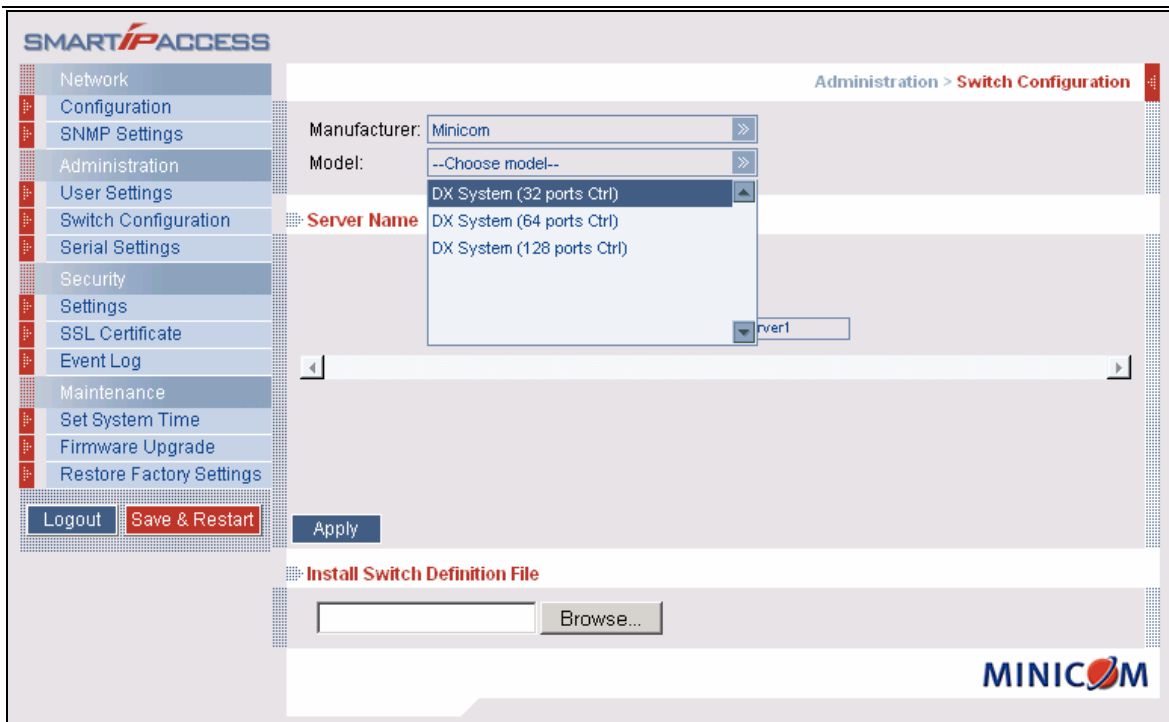
Navigate to Tools | Options in the DX AIM interface and configure the following settings:

- Enable Direct Connection must be selected
- Use Consistent Hotkey must be selected
- Direct Hotkey must be set to CTRL – CTRL for all users

<p>admin Settings</p> <p>Name: Minicom DX Matrix #1</p> <p>MAC: 0050C236E0EA</p> <p>Keyboard Layout: English</p> <p>Language: English</p> <p>Hotkey to AIM: SHIFT-SHIFT</p> <p>Direct Hotkey: CTRL-CTRL</p>	<p>IP/Cascade Settings:</p> <p>IP Address: 192.168.0.245</p> <p>Subnet Mask: 255.255.255.0</p> <p>Default Gateway: 192.168.0.1</p> <p>SNMP Manager: </p> <p><input type="checkbox"/> Send Log Trap</p> <p>Configure cascade options: <input type="button" value="Configure"/></p>
<p>Security:</p> <p> <input type="radio"/> Security Off <input checked="" type="radio"/> Security On <input type="radio"/> Security High </p> <p> Relate Name: <input type="radio"/> To Server <input checked="" type="radio"/> To Port </p> <p><input type="checkbox"/> Lock configuration</p>	<p>Extensions</p> <p><input checked="" type="checkbox"/> Enable Screen Saver</p> <p><input checked="" type="checkbox"/> Enable Direct Connection</p> <p><input checked="" type="checkbox"/> Use consistent hotkey</p>

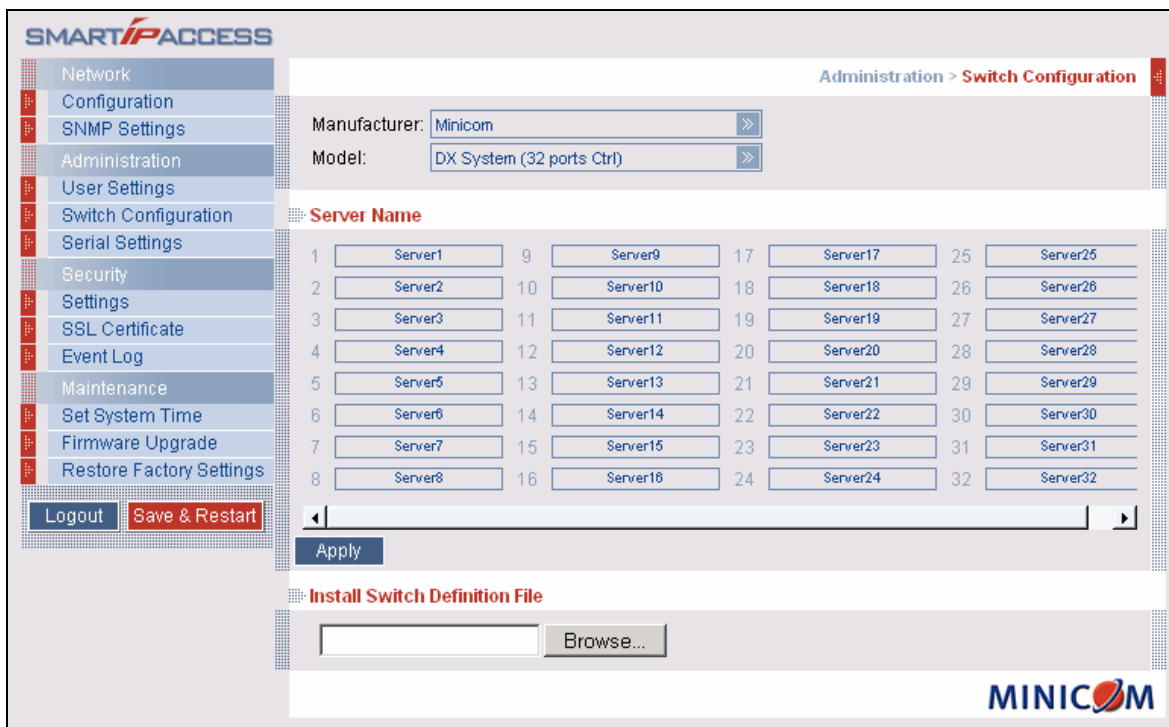
Download the DX switch file for IP Access from the following link:

www.minicom.com/support/SwitchFiles/DXSystem.zip. Unzip the file to temporary folder and load **DXSystem.rpc** Switch Definition File to IP Access connected to the DX User unit. Please refer to the IP Access User Guide for more information how to install new Switch Definition File.



Select **Minicom** in the list of KVM Switches manufacturers and then select **DX System** with the number of ports your DX System has (Currently supported 32, 64 and 128 port systems).

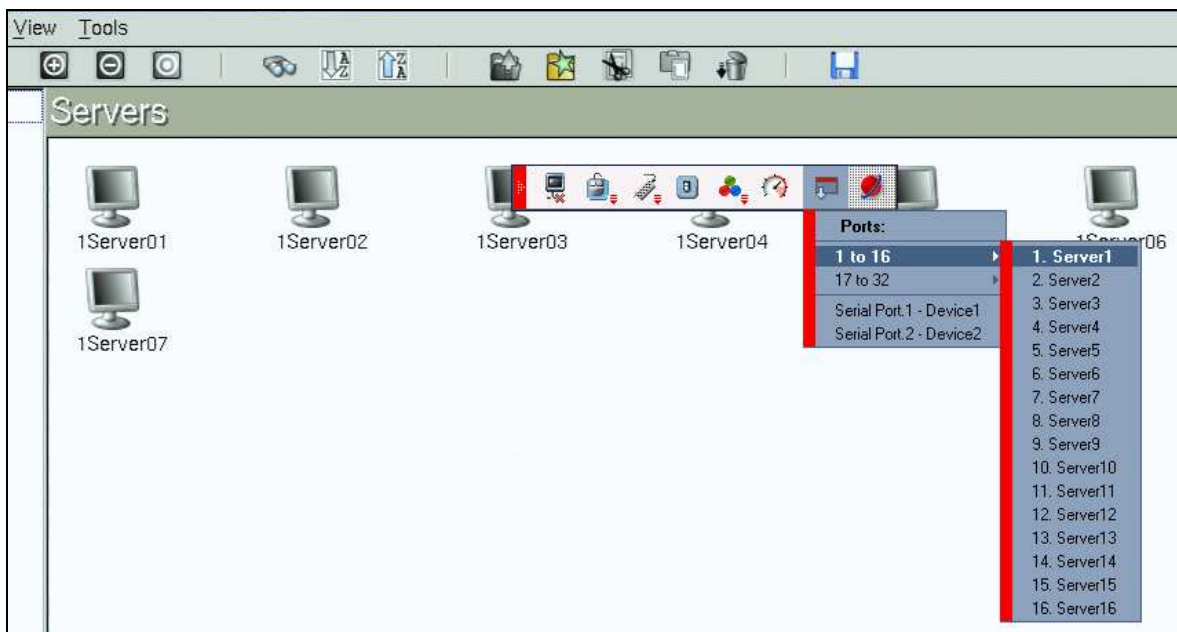
Type in the names of the servers connected to the DX System. The port number in the IP Access configuration page corresponds to the port number in the DX System. Please refer to IP Access User Guide for more information.



You may verify the names of the servers and their corresponding port number in DX System by selecting the **View | Details** in Servers screen of the DX User unit. The hotkey will be shown on the right of the server name in the Hotkey column:

Servers	
Device	Hotkey
1Server01	CTRL -CTRL 1 Enter
1Server02	CTRL -CTRL 2 Enter
1Server03	CTRL -CTRL 3 Enter
1Server04	CTRL -CTRL 4 Enter
1Server05	CTRL -CTRL 5 Enter
1Server06	CTRL -CTRL 6 Enter
1Server07	CTRL -CTRL 7 Enter

To operate the DX system remotely you should login to the IP address of the IP Access with the user name and password configured in IP Access. Once you connected, you should login to DX system with user name and password configured in the DX system. After successful login to the DX system you switch between the computers using the IP Access toolbar.



COMMENTS:

- For correct operation of IP Access and DX User unit the following firmware must be installed in the units:
 - 2.0 B224 or later for DX User unit
 - 2.0.8.38 or later for IP Access.
- DX shouldn't be set to "Security High" mode because this mode requires inputting a password before switching to a server and this will disrupt the correct mouse synchronization and correct operation of IP Access.
- If all DX User units connected to IP Access units, you may consider setting the DX System to "Security Off" mode and rely on the IP Access authentication for better mouse synchronization.