

Title: Updating DX Central from version 1.28 to version 2.0

No: DX9-3

Date: Sunday, 03 September, 2006

SUMMARY:

DX 2.0 has many new features and enhanced security settings. The firmware upgrade from previous version to version 2.0 requires using older Update software. New Update software is used after DX was updated to version 2.0.

MORE INFORMATION:

Updating the DX Central

To update the firmware, the DX system must be connected and switched on.

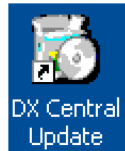
You update the DX Central firmware using the DX Central Update software which is located in \Software\Utilities\ folder in the zip file with the latest firmware. To obtain the latest firmware, go to <http://www.minicom.com/phandle.htm>. With the Update program you can also check the DX central version number, change the DX Central settings, restore factory defaults, backup the DX system database and load a saved database.

System requirements for the DX Central Update program

- Pentium class computer with 128 MB RAM and 10 MB free Hard Drive space
- Windows 2000 or later

Running the DX Central Update

Install the program on computer with Windows 2000 or later connected to the DX network.



A shortcut icon appears on the Desktop. There are two Update options:

- DX Central Update
- Upgrading from v1.9x to v2.0

Where you have v1.9x installed you must first upgrade from v1.9 to v2.0. Once v2.0 is installed you use the DX Central Update program. The Desktop icon only opens the DX Central Update

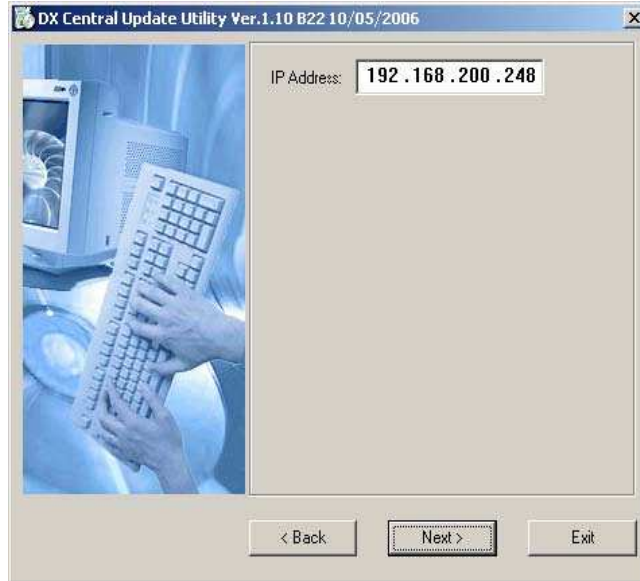
Upgrading from v1.9x to v2.0.

1. Select Start/Programs/DX Central Update/ DX Upgrader 1.9x to 2.0. The DX Central box appears.

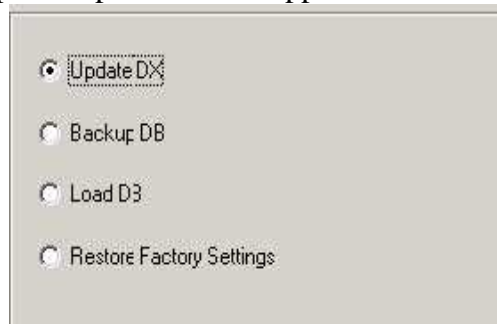


2. The default IP address of the DX Central appears. If the IP address is different, type

in the correct IP address and click **OK**. The DX Central Update Utility box appears



3. Click **Next**. The Update Options screen appears.



4. Check Update DX and click **Next**.

5. Locate the v2.0 upgrade file (DX_MU_Update_V2_0_B258_20060711.dx) and click **Open**. The firmware upgrades. Once the DX Central firmware is upgraded to v2.0, all future updates are done using the DX Central Update program

DX Central Update

All updates for DX Central with v2.0 firmware are done through DX Central Update.

1. Select Start/Programs/DX Central Update/ DX Central Update or click the Desktop icon. The Welcome to DXC update utility box appears.



2. Select the DX Central to be upgraded from the list or type the DX Central address in

the Input IP address box. Click **Next**. The login box appears.



3. Type the administrator username and password, and click **OK**. The DXC update utility options appear:



You can choose any of the following:

- Check version
- DX Central Settings (Check and/or change the DX Central unit network settings)
- Update the DX Central firmware
- Restore factory defaults – and erase the current database
- Backup System (database)
- Restore System (by loading a saved database)

To do any of the above, check the desired option and click **Next**.

4. Under DX Central Settings, you can change the DX Central network settings
To update the firmware or load a saved database, locate the file and click **Open**.
To backup the database, save the current database to the Hard drive.
To restore factory defaults, press **OK**.

COMMENTS:

While previous firmware of DX Central unit had version 1.28 and previous version of DX User unit had version 1.99, this Connectivity Information Sheet refers to version 1.9x as the inclusive firmware number of the previous version of DX System.