

Troubleshooting

Title: Resetting the DX Central to default settings

No: 200703-01

Contact: minicom.technical@minicom.com

Summary: This document explains how to reset the DX Central with firmware version 2.x to factory default settings

More Information

You can reset the DX Central database to factory default settings in the following two ways:

Option a:

1. Download and Install the DX Central update utility (you can use the following link: http://www.minicom.com/support/dx/dxc_update_v2.1b30.exe)
2. Connect an Ethernet cross cable between your Computer's Ethernet port and the Ethernet port of the DX Central.
3. Execute the DX Central update utility, the following screen appears

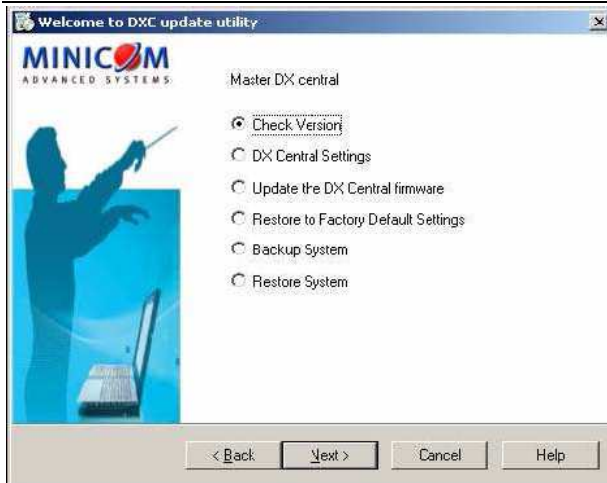


The DX Central Master unit will be shown next to its IP address (Note: make sure that your notebook LAN is configured to the same subnet as the DX Central unit)

4. Select the DX Central unit and click next, a login screen appears.



5. Login with the DX Administrator password (Note: the default login is: admin/admin), the following screen appears



6. Select “Restore to Factory Default Settings” and press next. When the process is completed the DX central database is restored to the default settings

Option b:

1. Download the DX Central Serial utility into your computer’s hard drive:
www.minicom.com/support/DX/serialutl.exe
2. Connect the Null Modem cable between your computer’s Serial port and the DX Central’s Serial port and run the downloaded software.
3. Select the COM port to which the Null Modem cable is connected, the following screen appears:



3. Select Set Factory Defaults and press Finish to restore DX Central factory defaults.

Notes:

The DX Central Serial utility also allows resetting the DX Central Administrator password to the default password ('admin').