

Product Update

Title: Update firmware for the Smart IP Access

No: 200709-01

Contact: mtu@minicom.com

Summary: Smart IP Access firmware was recently updated to include product operation enhancements.

More Information

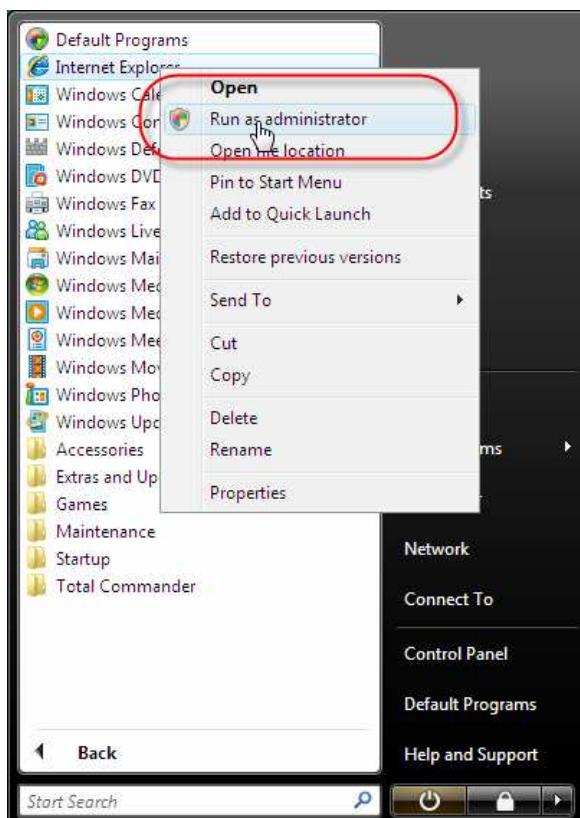
We updated the Smart IP Access firmware to version 2.0.8.57 which is available from our support web site at <http://www.minicom.com/phandf.htm>

This version has following improvements:

- Added support for Microsoft Windows Vista on a client computer:

To connect to the Smart IP Access from Windows Vista, the user must run the Internet Explorer as Administrator. To do this you need to right click on the explorer icon on the task bar and select to run the Internet Explorer application as administrator.

Look at the image below: (note: type the administrator's password when prompted)



- Fix for 'Right Shift' key when recording a Macro key sequence.
- Operation improvement in 'managed by KVM.net' mode to Support for more than 300 users.
- Added support for Aten Altusen KVM OSD resolution

To update the firmware please follow these steps:

1. Ensure that Smart IP Access is connected to computer or a KVM switch and the computer or KVM switch is switched on. Ensure that power input of the computer / KVM switch and the Smart IP Access won't be interrupted during the update process.
2. Log on to Smart IP Access configuration web page with administrator permissions:
<https://xxx.xxx.xxx.xxx/config> (where xxx.xxx.xxx.xxx is the IP Address of the unit)
3. From the menu select Firmware Upgrade. The Firmware Upgrade page appears
4. Locate and upload the update file from your client system. (note: In case of any errors the upload will be aborted)
5. Verify the current Smart IP Access firmware and newly uploaded firmware versions.
6. Press the 'Start Update' button. The Smart IP Access starts to update the firmware.
Warning! This process is irreversible; ensure the Smart IP Access power won't be interrupted during the update process, as this may cause damage to the unit.
7. When prompted press 'Reboot' button to reboot the Smart IP Access. One minute later, the Smart IP Access will run with the new firmware. You must login again.
8. **Warning!** The unit may lose all user configurations except IP Settings after firmware upgrade and may revert to the factory default settings (Except the network settings which will remain unchanged). Each release contains warning if all user settings would be lost or not.

Notes: