

## Application

**Title: Connecting a Matrix KVM switch to the KVM.net**

**No: 200709-03**

**Contact: [mtu@minicom.com](mailto:mtu@minicom.com)**

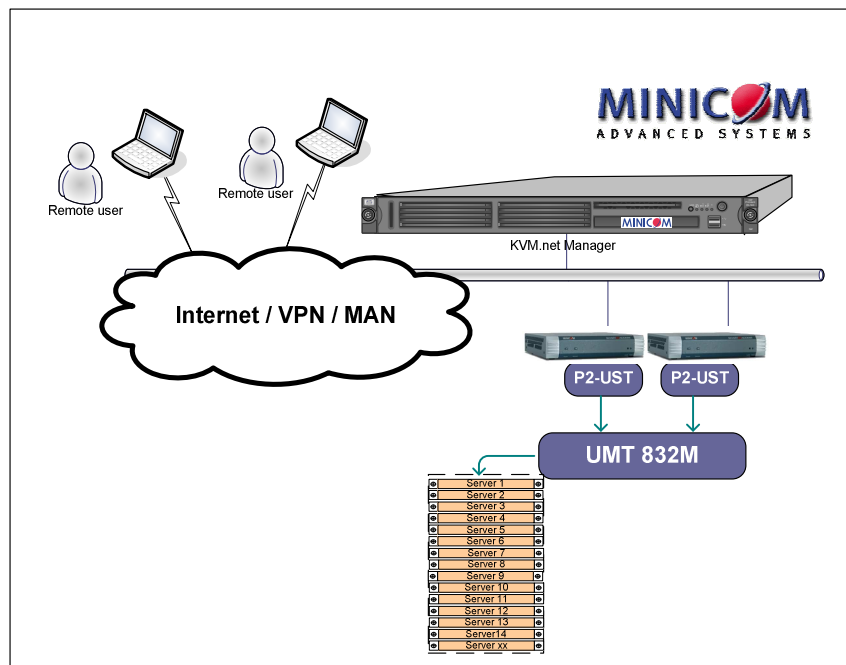
**Summary: This document explains how KVM.net controls servers behind a Matrix KVM switch**

---

## More Information

The KVM.net system can control and connect to servers behind a Matrix KVM switch. This allows more than one user logged on KVM.net system to be connected simultaneously to the servers behind the Matrix KVM switch (up to the limit of the Matrix KVM switch)

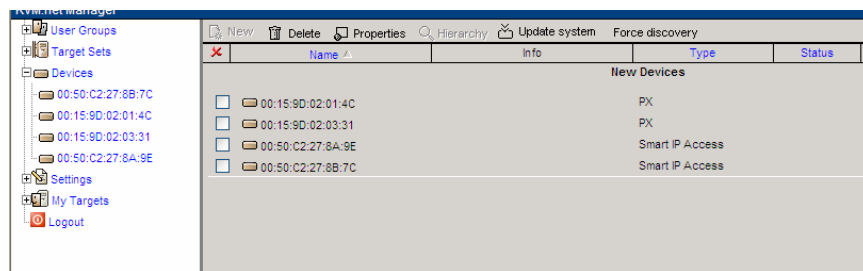
The diagram below shows how KVM.net can connect to a Paragon 1 system:



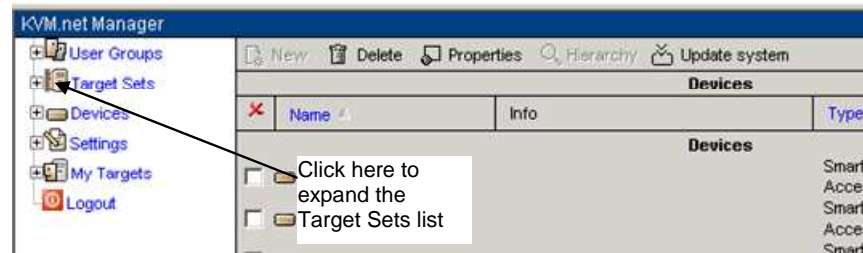
1. After connecting an IP Access to the User port of the Matrix KVM Switch you need to configure the IP Access Settings in the KVM.net Manager.
2. Browse and login to the KVM.net Manager (the default login is: admin/access)



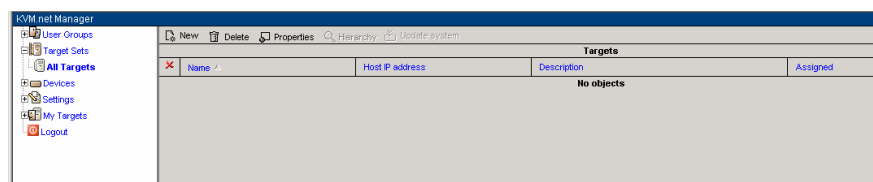
3. Once logged in, a similar screen to the one below appears:




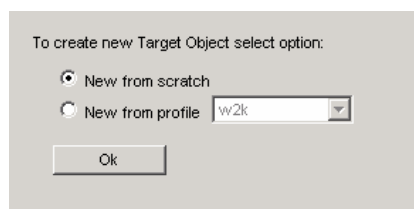
4. From the Navigation tree, expand Target Sets



5. Click All Targets. The Target page appears:



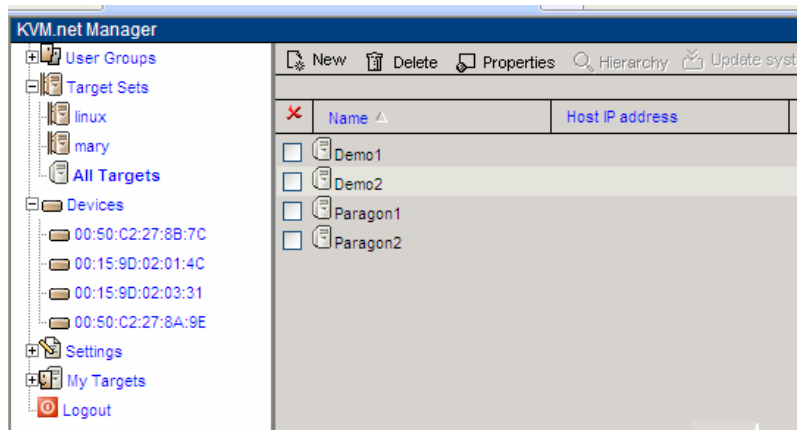
6. From the toolbar, click , the following prompt appears:



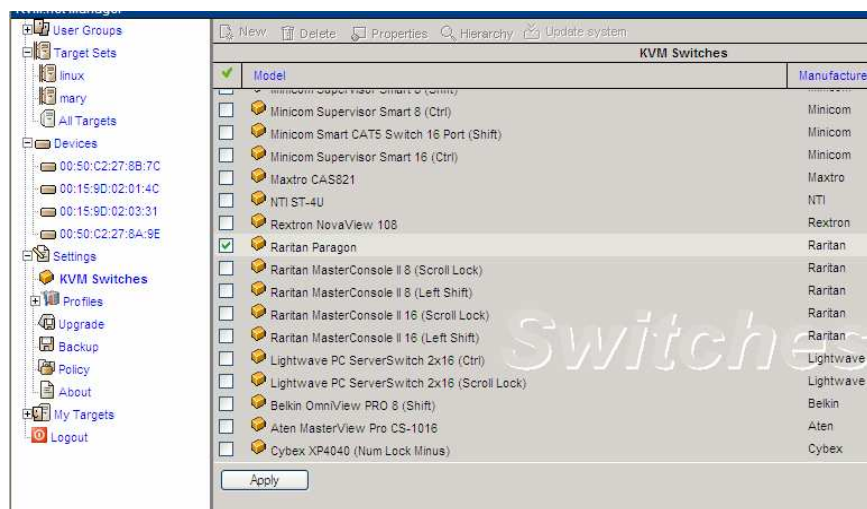
7. Select New from scratch, and the following screens appears:



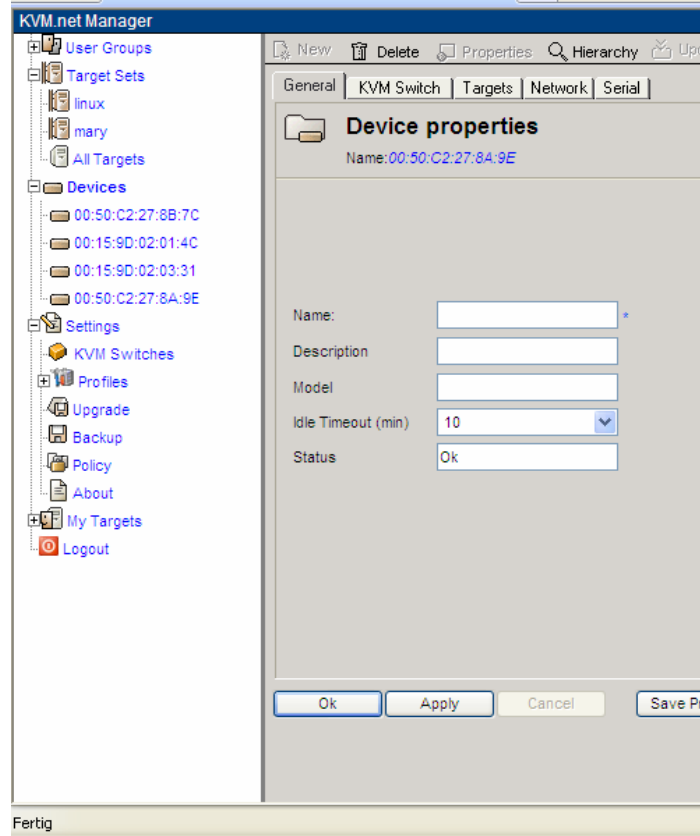
- Configure and add the Targets which are connected behind the Matrix KVM Switch. When finished you will see something like this:



- In the example below there are two IP Access units connected to a Raritan Paragon 1 Matrix KVM Switch (one IP Access on each Paragon 1 user station). Go to Settings / KVM Switches and select the Matrix Switch, connected to the IP Access. In our case Raritan Paragon 1.



- Go to Devices. Select one of the IP Access units connected to the Paragon 1 user stations (you can detect the IP Access device name using their MAC Address ID)



11. Give a name to the IP Access units
12. Go to the KVM Switch tab
13. Select the Paragon from the KVM switch list



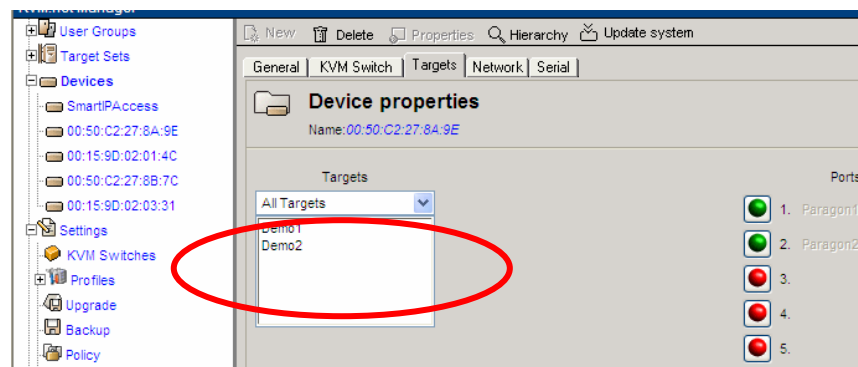
14. Go to the Targets tab and assign the computers which are connected to the Paragon 1 computer ports. In our example, 2 computers to port 1 and 2.



15. Click Ok when you are done!

16. Configure the next Smart IP Access unit (Repeat steps 11- 14 above)

Note!: When you need to select targets on the 2<sup>nd</sup> user station IP Access select in the drop down bar to show “All Targets” and assign the same computer to the same port, like in the previous IP Access.



17. Now you are able to access the target servers through the target selection on the KVM.net “My Targets” screen.