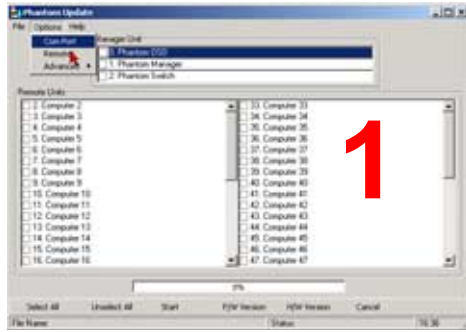
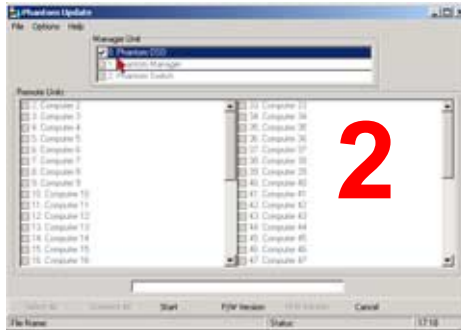


Upgrading the firmware of Phantom Manager unit using the Phantom Update software.



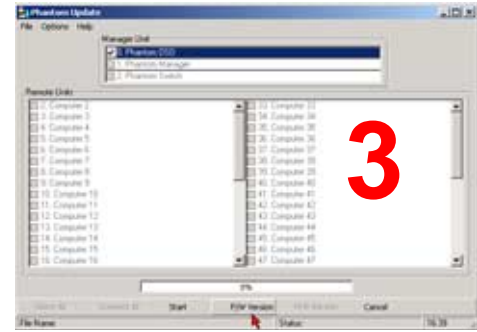
1

Install and run the Phantom Update software. Select the Serial port where the Phantom Download cable is connected in Options | Com Port menu. Press Shift key twice on the keyboard and then F10 function key. You will see the FIRMWARE UPGRADE label on you monitor.



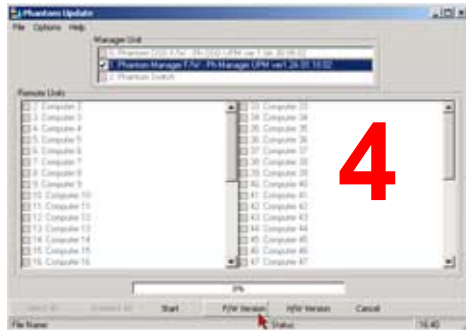
2

Before upgrading the Manager unit it is recommended to verify its firmware version. Select the 0. Phantom OSD for the OSD firmware or Select the 1. Phantom Manager for the Manager firmware Select the 2. Phantom Switch for the MX II Switch firmware



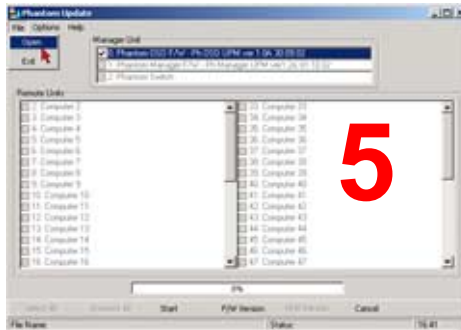
3

Press F/W Version button to verify the firmware of the OSD or Manager or Switch. You may press H/W Version button to verify the hardware revision of the Manager unit. There is no H/W Version for the OSD or Switch.



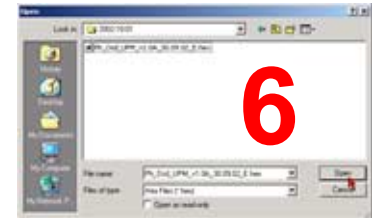
4

The Phantom Update software will check OSD, Manager or Switch and display its firmware version.



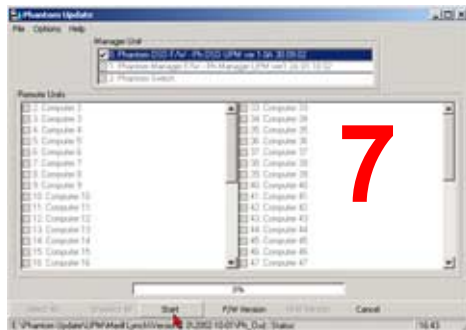
5

Select the Manager or OSD and then select File | Open menu.



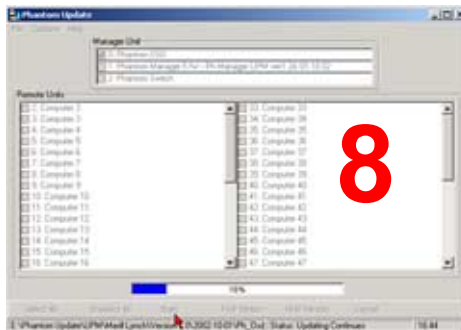
6

Navigate to folder where new firmware is located. The Phantom Update software uses file masks, so you can see only files corresponding to the mask representing the selected units: Ph_Slv_*.hex for Remote units, Ph_Mst_*.hex for Manager and Ph_OSD_*.hex for the OSD.



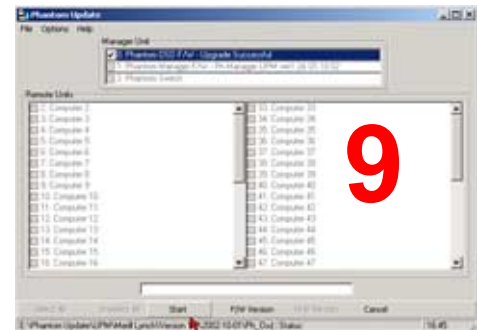
7

After you selected the correct file, press the Start button to begin the firmware update process.



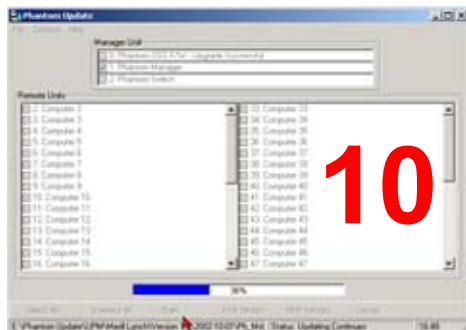
8

The firmware update process will start



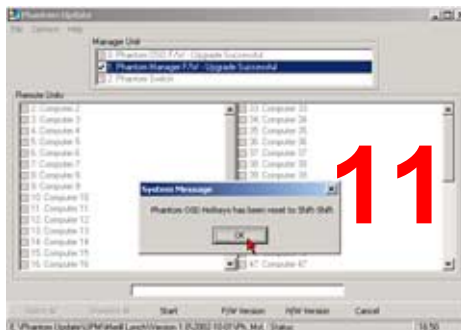
9

If the firmware upgrade finished successfully, you will see the message "Upgrade Successful". If the wrong firmware file was used for the upgrade, you will see the message "Upgrade Denied". If for some reason the firmware upgrade failed, you will see the message "Manager is Damaged". In this case repeat the firmware upgrade process.



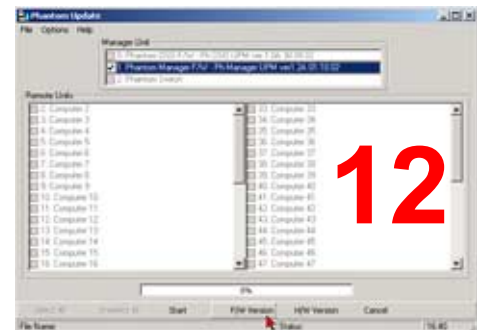
10

Repeat the firmware upgrade process for Manager and if you have the MX II for the Switch.



11

After the firmware upgrade of the Manager, the OSD hotkey will revert to Shift-Shift. Don't forget to change the hotkey to hotkey that was configured before the upgrade.



12

Check the firmware version of the OSD, Manager and Switch. To do this, select "0. Phantom OSD F/W" or "1. Phantom Manager F/W" or "2. Phantom Switch F/W" and press F/W Version button. The updated firmware version will appear.