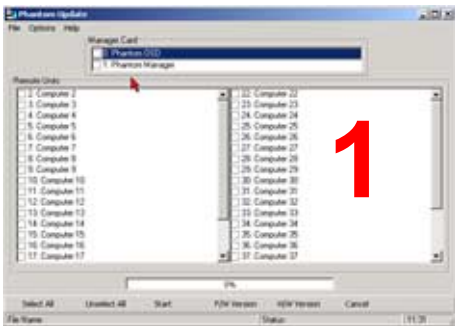
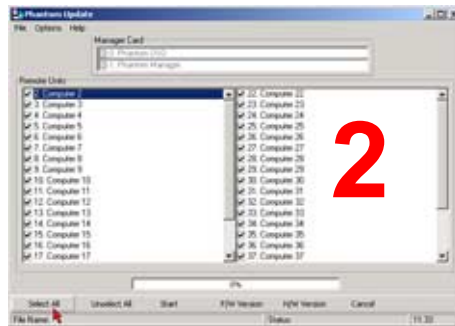


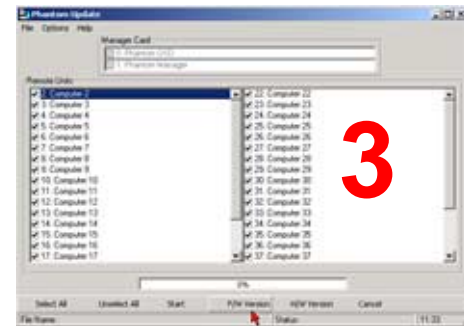
Upgrading the firmware of Phantom Remote unit in the Phantom Update software.



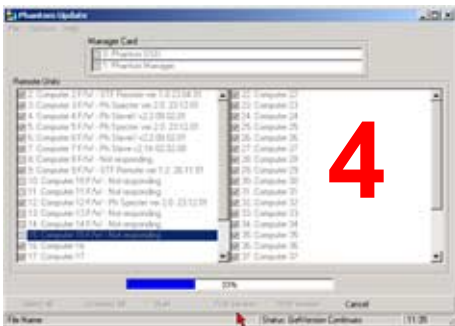
Install and run the Phantom Update software. Select the Serial port where the Phantom Download cable is connected in Options | Com Port menu. Press Shift key twice on the keyboard and then F10 function key. You will see the FIRMWARE UPGRADE label on you monitor.



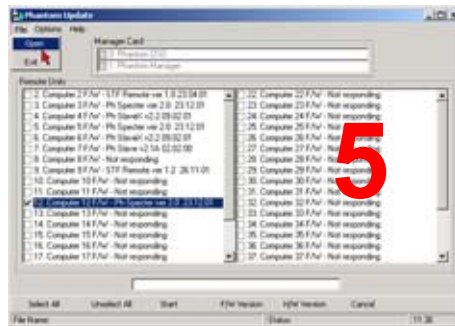
Before upgrading Remote units it is recommended to verify the firmware version of each Remote unit. Press Select All button to select all Remote units.



Press F/W Version button to verify the firmware of each Remote Unit. You may press H/W Version button to verify the hardware revision of each Remote unit.



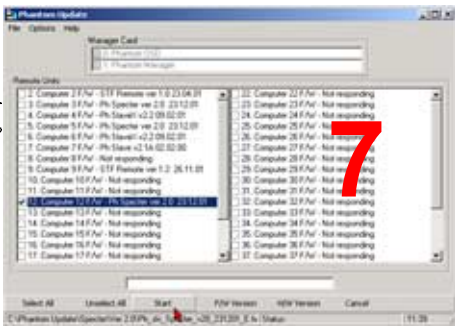
The Phantom Update software will check each Remote unit and display its firmware version. Remote units that are not connected or switched off will display "Not responding" status.



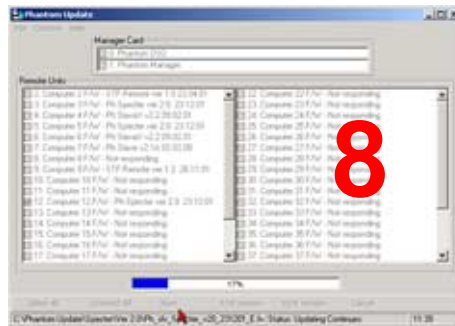
Select the Remote units that you want to upgrade and then select File | Open menu.



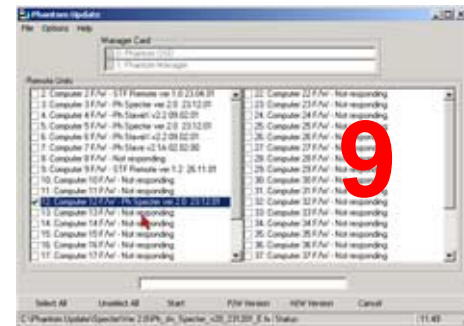
Navigate to folder where new firmware is located. The Phantom Update software uses file masks, so you can see only files corresponding to the mask representing the selected units: Ph_Slv_0000_E.hex for Remote units, Ph_Mst_0000_E.hex for Manager and Ph_OSD_0000_E.hex for the OSD.



After you selected the right file press the Start button to begin the firmware update process.



The firmware update process will start



You should see the new firmware version of the Remote unit(s) in the Phantom Update software.