

Power On Cable User Guide



www.minicom.com

International HQ

Jerusalem, Israel

Tel: + 972 2 535 9666

minicom@minicom.com

America

Linden, NJ, USA

Tel: + 1 908 486 2100

info.usa@minicom.com

Technical support - support@minicom.com

Table of Contents

1.	Introduction	2
2.	The PoC system	2
3.	Pre-installation guidelines	2
4.	System components	3
5.	Connecting the PoC (standalone).....	3
6.	Connecting a PoC to the IP Control	4
	Remote session	5
7.	Connecting a PoC to the PX	6
	Remote session	6
8.	LED indicators on the PoC.....	7
9.	Using the PoC Management Utility	8
	Names tab	9
	Redundancy tab.....	10
	Groups tab.....	11
10.	Operating the system	12
11.	Technical specifications	13
	Appendix A: The RS232 control protocol:	14

1. Introduction

The Power on Cable (PoC) from Minicom is a unique “power cord” with a zero U form-factor. It can switch on, off and power cycle via serial command to between 1 and 99 servers. Works with Minicom’s IP Control, PX or standalone.

2. The PoC system

The figure below illustrates the PoC system, showing the POCs connected to servers and to the IP Control.

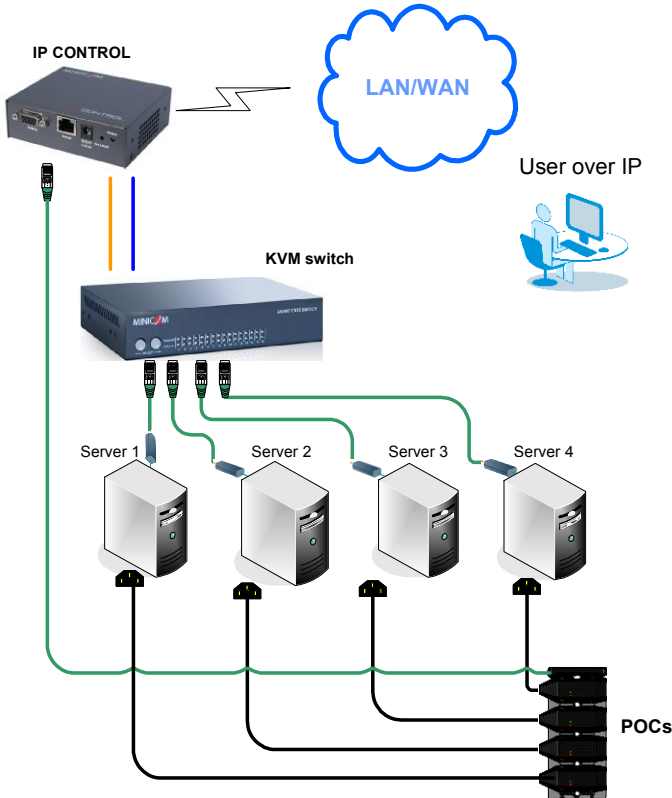


Figure 1 PoC + IP Control configuration

3. Pre-installation guidelines

Switch off the computers to be connected with PoCs.

4. System components

The PoC system comes with:

- 1 PoC
- 1 Transmitter
- 1 Transmitter cable for IP Control
- 1 rack mount

5. Connecting the PoC (standalone)

Connect the PoC as illustrated in Figure 2.

1. Slot the Transmitter into the side of the PoC furthest away from the LEDs. Ensure the arrows on the Transmitter and PoC are facing each other.
2. Connect the Serial cable's RJ11 connector to the Transmitter port and connect the Serial cable's RJ45 connector to the server's Serial port using a RJ45 to Serial connector converter.
3. Connect the PoC's cable to the server's power port.
4. Connect the supplied cable to the PoC and to a power outlet. The PoC can work on 220V our 110V.

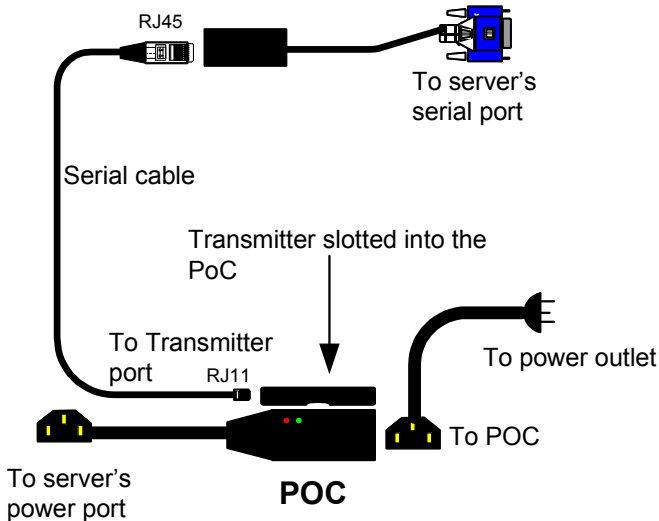


Figure 2 Connecting the PoC

6. Connecting a PoC to the IP Control

Connect to the IP Control using the PoC Transmitter as follows.

1. Slot the Transmitter into the side of the POC furthest away from the LEDs. Ensure the arrows on the Transmitter and PoC are facing each other.
2. Connect the Serial connector to Serial port of the IP Control. See Figure 3.

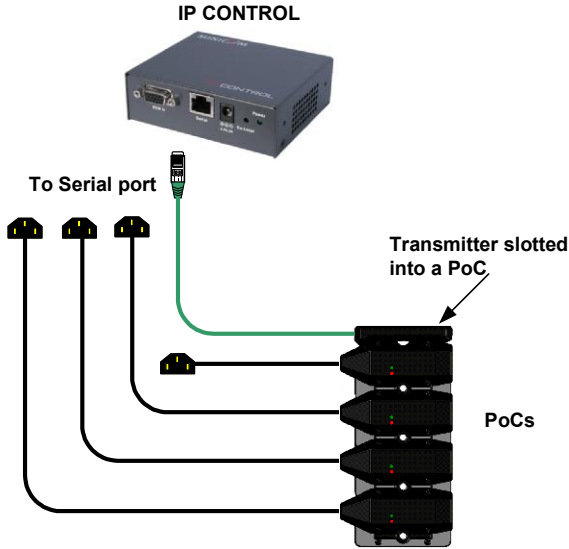


Figure 3 Power on Cable Transmitter connections

Complete the setup via the IP Control Web configuration interface. See the IP Control User Guide to log into the IP Control Web interface.

The sections below detail the specific areas of the IP Control Web configuration interface that concern the PoC configuration. For convenience they are written here as well as in the IP Control User Guide.

Once you log into the IP Control Web interface, from the menu click **Serial Settings**, the **Serial Settings** appear, see Figure 4.

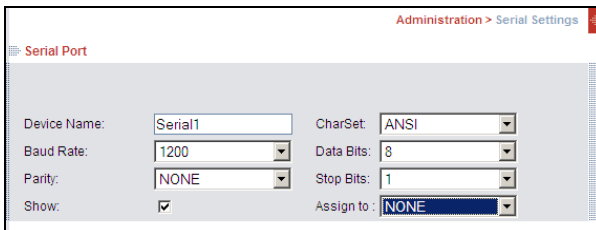


Figure 4 Serial Settings

Select POC from the Assign to drop down list. All other parameters are then grayed out.

From the menu click **Switch Configuration**, the page appears as follows:

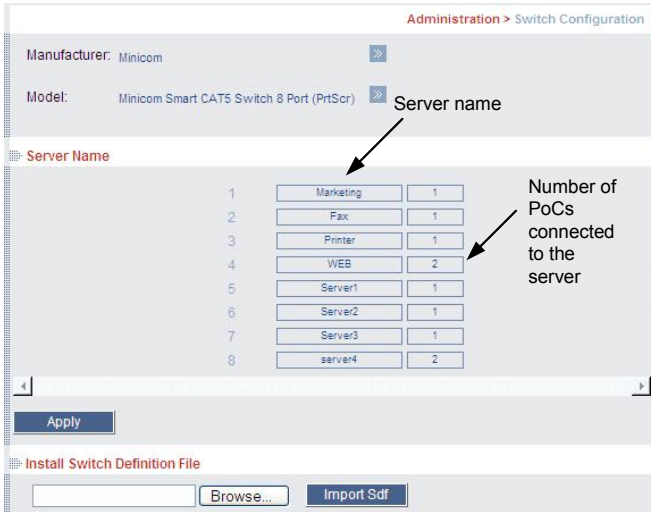


Figure 5 PoCs attached to the servers

Type a name for the server and type the number of PoCs attached to each server as illustrated in Figure 5.

Save the changes.

Remote session

During a remote session you can power manage the Target servers as follows:

From the Toolbar, click . The Power menu appears, see below.

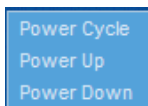


Figure 6 Power menu

To send a power cycle command or to power down or up the currently accessed Target server, select the appropriate option.

Note! Only the currently accessed Target server is affected, so to power manage other Target servers you must access each one individually.

7. Connecting a PoC to the PX

Connect to the PX using the PoC Transmitter as follows.

1. Slot the Transmitter into the side of the POC furthest away from the LEDs. Ensure the arrows on the Transmitter and PoC are facing each other.
2. Connect the 26 pin connector of the supplied PX to PoC cable to the 26 pin port of the PX. See Figure 7.
3. Connect the PX to PoC cable Video connector to the server's Video port and connect the USB connector to the server's USB port.
4. For the rest of the PX connections, see the PX User Guide.

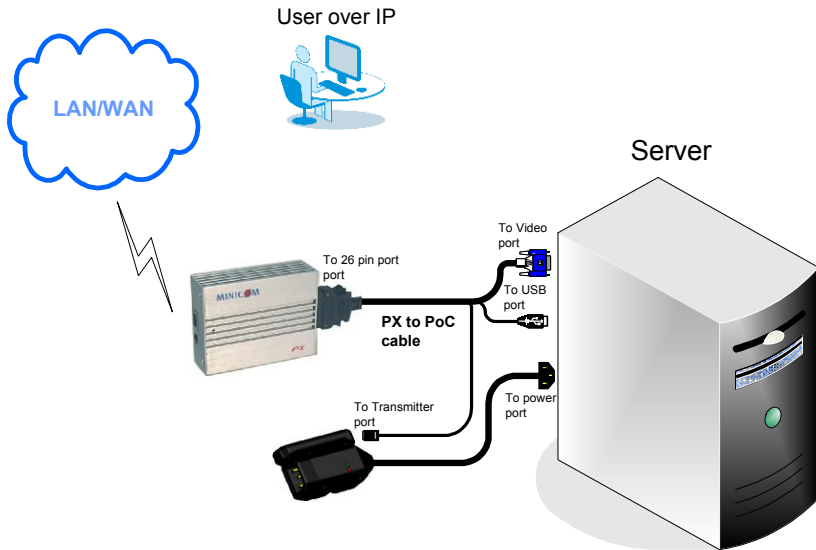


Figure 7 Power on Cable to PX connections

Remote session

During a remote session you can power manage the Target servers as follows:

From the Toolbar, click . The Power menu appears, see below.

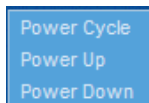


Figure 8 Power menu

To send a power cycle command or to power down or up the currently accessed Target server, select the appropriate option.

8. LED indicators on the PoC

There are 2 LEDs.

The green LED indicates the PoC is connected to a power outlet. The red LED indicates that the server is powered on. Both LEDs flash when the Transmitter unit communicates with the serial device.

9. Using the PoC Management Utility


When PoCs are connected to the IP Control or the PX, use the web interface to configure the PoCs.

For standalone applications, use the PoC Utility or a standard hyperterminal to send commands to the PoCs. (The syntax for the commands can be found in Appendix A on page 14).

1. Download the PoC Management Utility program from our website at:

<http://www.minicom.com/phandlm.htm>

2. Install the PoC Management Utility program on your computer.

3. Open it by either clicking the shortcut on the desktop , or choose Start/Programs/PoC Management/PoC Management. The PoC Management Utility appears.

4. Click Commands/Configuration or  the General tab appears, see Figure 9.

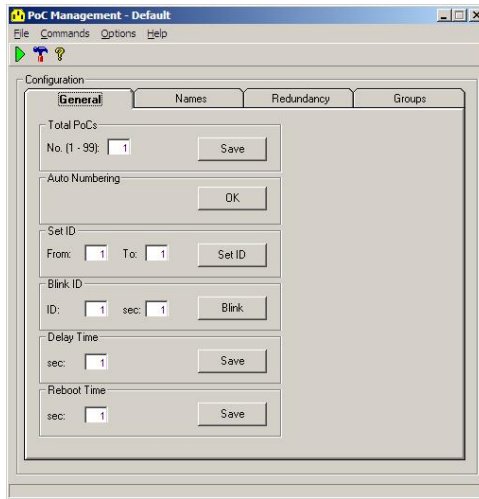


Figure 9 General tab

You can do the following:

Total PoCs – Change the number of PoCs connected from 1 to 99 units. Click Save. The number of PoCs selected appears in the Names tab.

Auto Numbering - This will automatically number all the PoCs in the system.

Warning! This will erase any names and groups in the system. Click OK.

Set ID – You can choose to autonumber just some of the PoCs and configure the names of other PoCs yourself as explained below in the names tab. Click Set ID.

Blink ID - See which POC is connected by blinking the LEDs of a defined PoC and specifying the blink time from 1-99 seconds. Click Blink.

Delay Time – Set the time delay between each PoC in the system shutting down. For example if the delay time is 10 seconds, then there is a delay of 10 seconds between each PoC shutting down when the whole system is shut down. Click Save.

Reboot time - Choose the time delay from 1-99 seconds for each PoC to reboot, when sending a reboot command to the whole system. Click Save.

Names tab

Click the Names tab, the following appears.

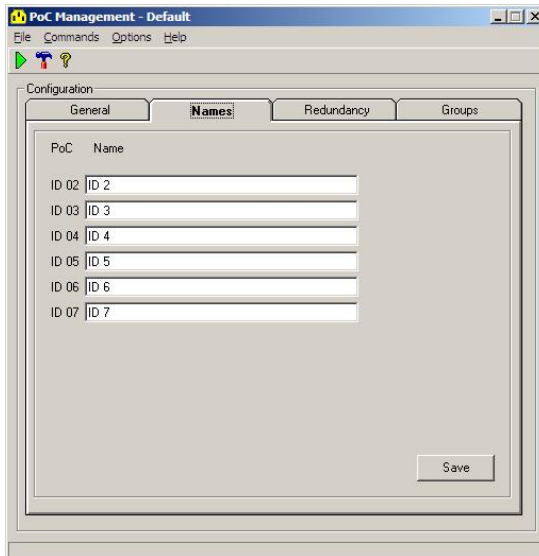


Figure 10 Names tab

Give the PoCs individual names and click Save.

Redundancy tab

Where a server has 2 power outlets you can connect 1 PoC to each outlet. You can combine the PoCs into a single group so that in the Operation window you see the group of pocs as a unit and not separately. You then power manage the group of PoCs and not the individual PoC. For example if PoCs ID 5 and ID 6 are both connected to the Lab server, group PoCs ID 5 and ID 6 and call them Lab.

1. Click the Redundancy tab, the following appears.

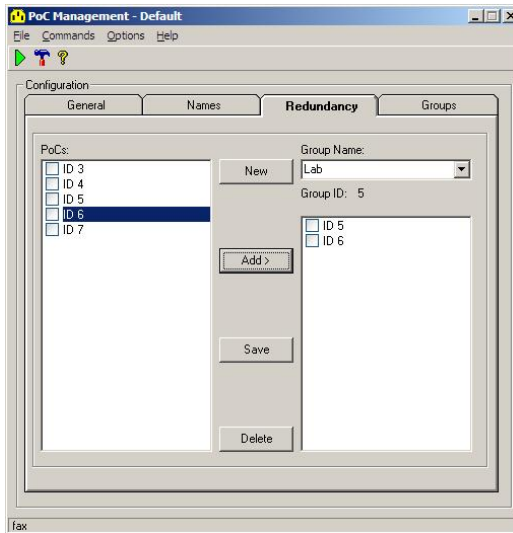


Figure 11 Redundancy tab

2. In the PoCs column select the PoCs connected to the same server and click Add. They appear in the right hand column.
3. Type a name in the Group Name field, or click New to give the group a name.
4. Click Save. The group with the name underneath appears as an icon in the Operation window see Figure 13 on page 12.

Groups tab

You can combine different PoCs together to form groups which you can then power manage, instead of managing them individually.

1. Click the Groups tab, the following appears.

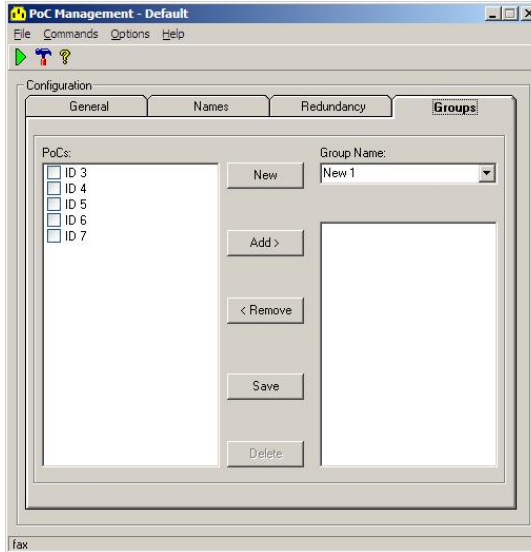



Figure 12 Groups tab

2. In the PoCs column select the PoCs connected to the same server and click Add. They appear in the right hand column.
3. Type a name in the Group Name field, or click New to give the group a name.
4. Click Save. The group with the name underneath appears as an icon in the Operation window inside the group tab.

10. Operating the system

To operate the PoCs, click  or choose Commands/operation. The Operation window appears, see figure below.

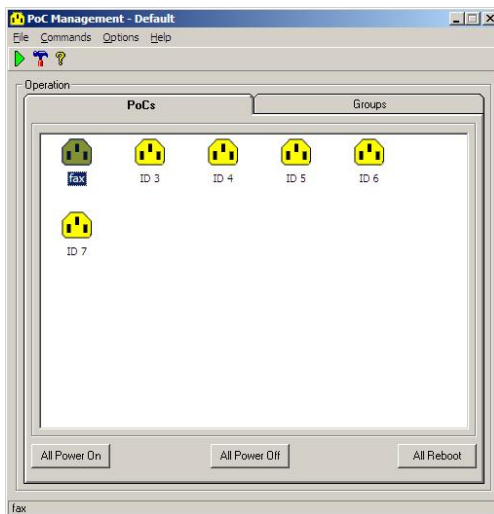


Figure 13 Operation window

1. Choose to display either the PoCs or Groups by pressing the appropriate tab.
2. Click a PoC or Group, the following appears.

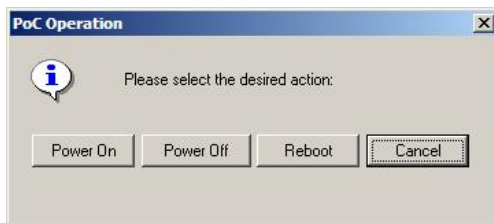


Figure 14 Power management options

3. Choose the appropriate button to power off, power on or reboot the server or all servers in the group.
4. To power manage all connected PoCs, click the All power On, All power Off or All Reboot buttons.

11. Technical specifications

Specifications	
Electrical Rating	
Input Voltage	90 - 260VAC
Input Frequency	44 – 66Hz
Max. Output Current	10Amp
Connectors	
Input Receptacle	C14
Output Power Cable	C13 + 150cm Cable
Communication Ports	IrDA Transmit & Receive
Communication	
Protocol	
Baud Rate	1200bps
Distance	4 – 8m
LED Indicator	
Green LED	Input Power Status
Red LED	Output Power Status
Operation & Environment	
Operating Temperature	0°c to 50°c /32°f to 122°f
Relative Humidity	0 - 95%
Storage Temperature	-15 °c to 50 °c / 5 °f to 122 °f
Plastic enclosure	
Basic unit	92x42.7x29.5mm/3.62x1.68x1.16inch
Multiple Devices	92x44.3 (1"U")x29.5mm/3.62x1.74x1.16inch

Appendix A: The RS232 control protocol:

Switch on ID "X" – basic unit with ID number "X" will switch on.

```
^MS005xxx,I
M : Minicom
S : Switch
005 : "xxx,I" length
xxx : ID
I : Turn ON
```

Switch off ID "X" – basic unit with ID number "X" will switch off.

```
^MS005xxx,O
M : Minicom
S : Switch
005 : "xxx,I" length
xxx : ID
O : Turn OFF
```

Reboot ID "X" Time "Y" – basic unit with ID number "X" will switch off and after "Y" second it will switch on.

```
^MR007xxx,yyy
M : Minicom
R : Reboot
007 : "xxx,yyy" length
xxx : ID
yyy : "yyy" second
```

Change ID to "Y" – the connected basic unit ID number will be change to number "Y"

```
^MC007xxx,zzz
M : Minicom
C : Change ID
007 : "xxx,zzz" length
xxx : ID
zzz : Change to number "zzz"
```

System auto number "X" – in case of cascaded basic units the first one will get ID

```
number "X" the next one will get ID number "X+1" and so on.
^MA003xxx
M : Minicom
A : Auto Number
003 : "xxx" length
xxx : The first one ID number
```

Polling ID “X” Time “Y” – basic unit with ID number “X” will blink red LED about “Y” second..

^MP007xxx,yyy

M : Minicom

P : Polling

007 : "xxx,yyy" length

xxx : ID

yyy : "yyy" second

© 2009 Copyright Minicom Advanced Systems