

# Power On Cable Quick Installation Guide



www.minicom.com

## International HQ

Jerusalem, Israel  
Tel: + 972 2 535 9666  
[minicom@minicom.com](mailto:minicom@minicom.com)

## America

Linden, NJ, USA  
Tel: + 1 908 486 2100  
[info.usa@minicom.com](mailto:info.usa@minicom.com)

Technical support - [support@minicom.com](mailto:support@minicom.com)

## 1. Introduction

The Power on Cable (PoC) from Minicom is a unique “power cord” with a zero U form-factor. It can switch on, off and power cycle via serial command to between 1 and 99 servers. Works with Minicom’s IP Control, PX or standalone.

## 2. The PoC system

The figure below illustrates the PoC system, showing the POCs connected to servers and to the IP Control.

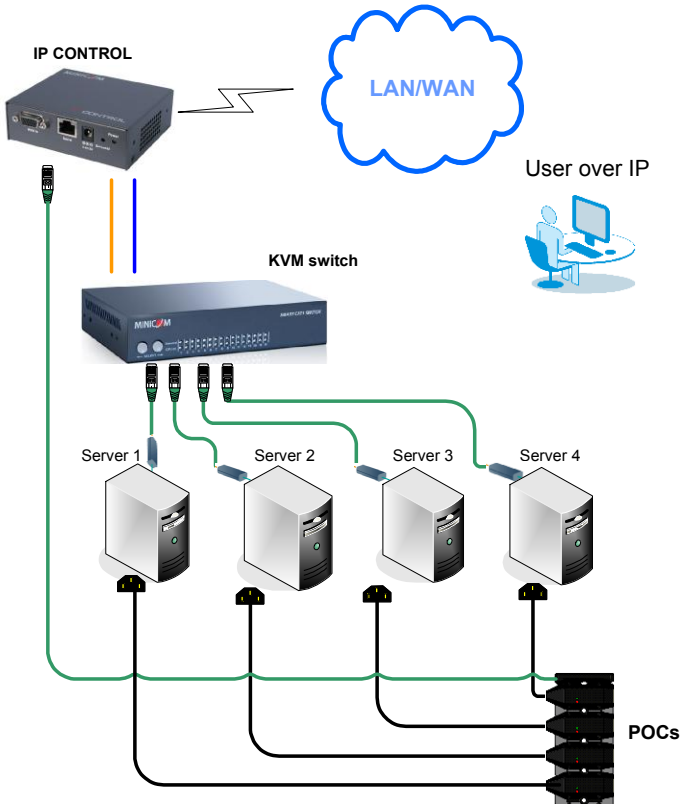


Figure 1 PoC + IP Control configuration

## 3. Pre-installation guidelines

Switch off the computers to be connected with PoCs.

## 4. System components

The PoC system comes with:

- 1 PoC
- 1 Transmitter
- 1 Transmitter cable for IP Control
- 1 rack mount

## 5. Connecting the PoC (standalone)

Connect the PoC as illustrated in Figure 2.

1. Slot the Transmitter into the side of the PoC furthest away from the LEDs. Ensure the arrows on the Transmitter and PoC are facing each other.
2. Connect the Serial cable's RJ11 connector to the Transmitter port and connect the Serial cable's RJ45 connector to the server's Serial port using a RJ45 to Serial connector converter.
3. Connect the PoC's cable to the server's power port.
4. Connect the supplied cable to the PoC and to a power outlet. The PoC can work on 220V or 110V.

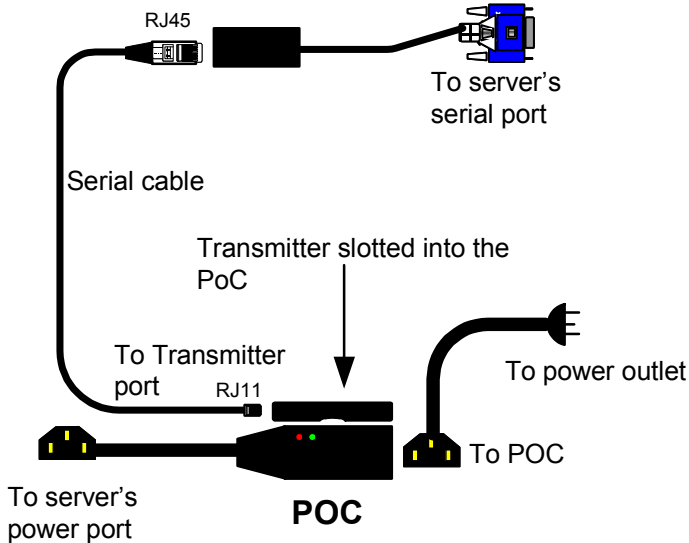


Figure 2 Connecting the PoC

## Connecting a PoC to the IP Control

Connect to the IP Control using the PoC Transmitter as follows.

1. Slot the Transmitter into the side of the POC furthest away from the LEDs. Ensure the arrows on the Transmitter and PoC are facing each other.
2. Connect the Serial connector to Serial port of the IP Control. See Figure 3.
3. For the rest of the IP Control connections, and to operate the IP Control system see the IP Control User Guide.

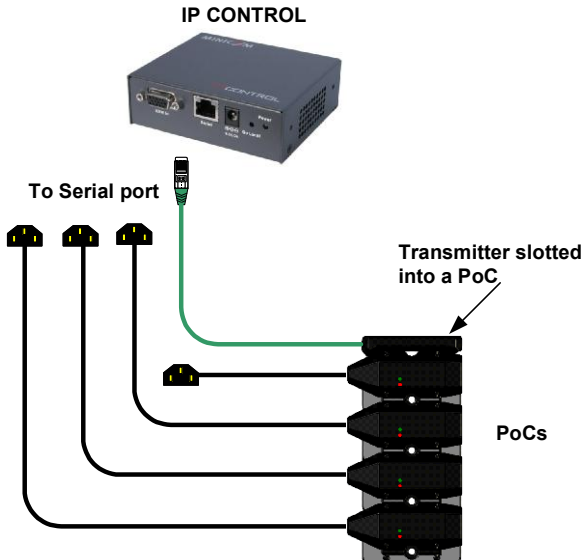


Figure 3 Power on Cable Transmitter connections

## Connecting a PoC to the PX

Connect to the PX using the PoC Transmitter as follows.

1. Slot the Transmitter into the side of the POC furthest away from the LEDs. Ensure the arrows on the Transmitter and PoC are facing each other.
2. Connect the 26 pin connector of the supplied PX to PoC cable to the 26 pin port of the PX. See Figure 4.
3. Connect the PX to PoC cable Video connector to the server's Video port and connect the USB connector to the server's USB port.
4. For the rest of the PX connections, see the PX User Guide.

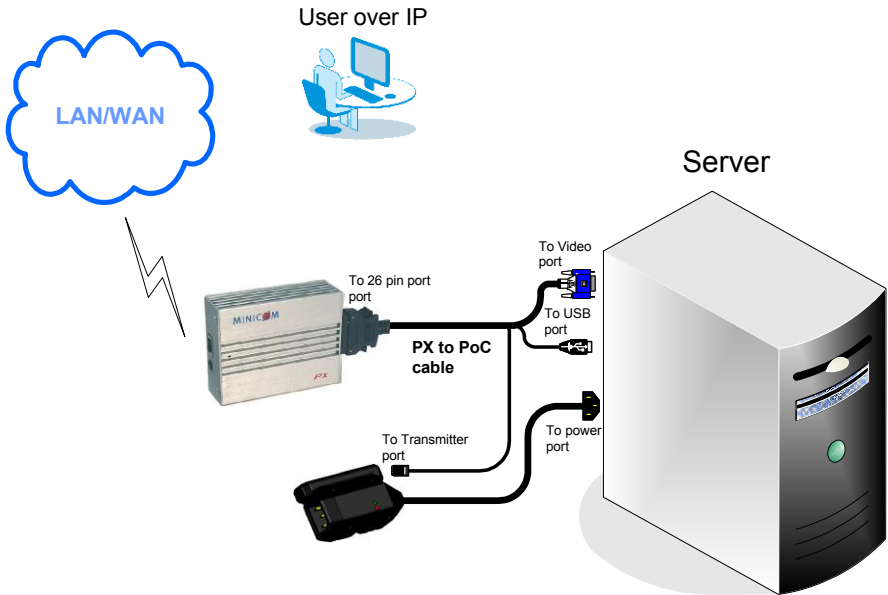


Figure 4 Power on Cable to PX connections

## 6. LED indicators on the PoC

There are 2 LEDs.

The green LED indicates the PoC is connected to a power outlet. The red LED indicates that the server is powered on. Both LEDs flash when the Transmitter unit communicates with the serial device.

## 7. Using the PoC Management Utility


When PoCs are connected to the IP Control or the PX, use the web interface to configure the PoCs.

For standalone applications, use the PoC Utility or a standard hyperterminal to send commands to the PoCs. (The syntax for the commands can be found in Appendix A in the softcopy User Guide).

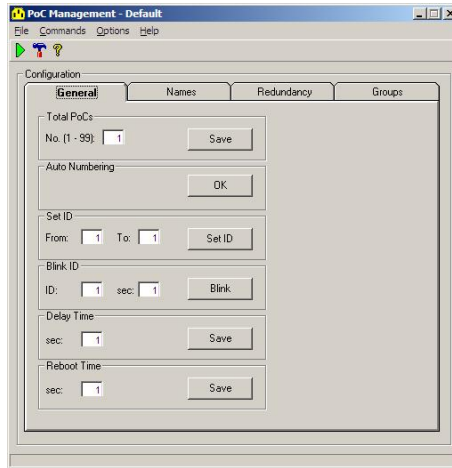
1. Download the PoC Management Utility program from our website at:

<http://www.minicom.com/phandlm.htm>

2. Install the PoC Management Utility program on your computer.

3. Open it by either clicking the shortcut on the desktop , or choose Start/Programs/PoC Management/PoC Management. The PoC Management Utility appears.

4. Click Commands/Configuration or  the General tab appears, see Figure 5.



**Figure 5** General tab

You can do the following:

**Total PoCs** – Change the number of PoCs connected from 1 to 99 units. Click Save. The number of PoCs selected appears in the Names tab.

**Auto Numbering** - This will automatically number all the PoCs in the system. **Warning!** This will erase any names and groups in the system. Click OK.

**Set ID** – You can choose to autonumber just some of the PoCs and configure the names of other PoCs yourself as explained below in the names tab. Click Set ID.

**Blink ID** - See which POC is connected by blinking the LEDs of a defined PoC and specifying the blink time from 1-99 seconds. Click Blink.

**Delay Time** – Set the time delay between each PoC in the system shutting down. For example if the delay time is 10 seconds, then there is a delay of 10 seconds between each PoC shutting down when the whole system is shut down. Click Save.

**Reboot time** - Choose the time delay from 1-99 seconds for each PoC to reboot, when sending a reboot command to the whole system. Click Save.

## Names tab

Click the Names tab, Figure 6 appears.

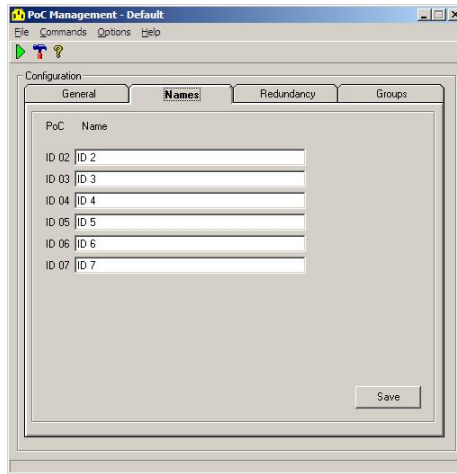


Figure 6 Names tab

Give the PoCs individual names and click Save.

## Redundancy tab

Where a server has 2 power outlets you can connect 1 PoC to each outlet. You can combine the PoCs into a single group so that in the Operation window you see the group of pocs as a unit and not separately. You then power manage the group of PoCs and not the individual PoC. For example if PoCs ID 5 and ID 6 are both connected to the Lab server, group PoCs ID 5 and ID 6 and call them Lab.

1. Click the Redundancy tab, the following appears.

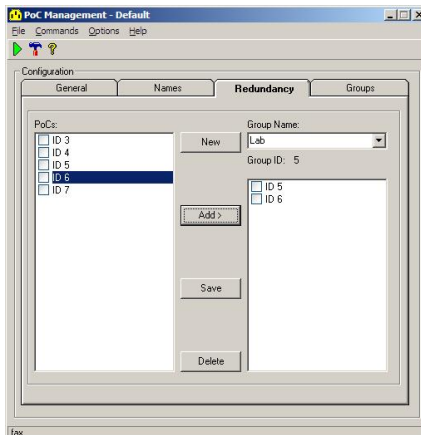


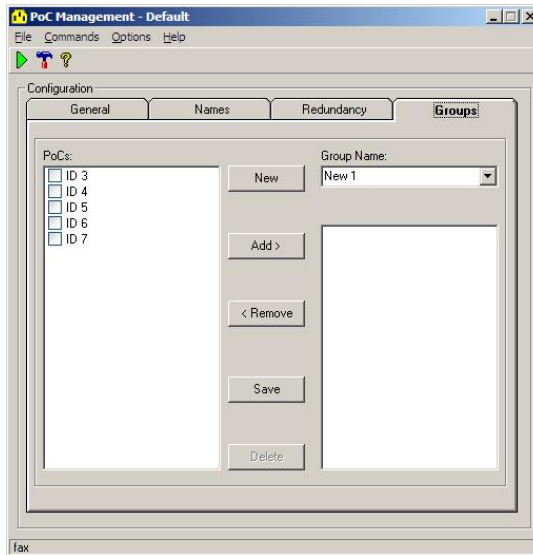
Figure 7 Redundancy tab

2. In the PoCs column select the PoCs connected to the same server and click Add. They appear in the right hand column.
3. Type a name in the Group Name field, or click New to give the group a name.
4. Click Save. The group with the name underneath appears as an icon in the Operation window (see the softcopy User Guide).

## Groups tab

You can combine different PoCs together to form groups which you can then power manage, instead of managing them individually.

1. Click the Groups tab, the following appears.



**Figure 8 Groups tab**

2. In the PoCs column select the PoCs connected to the same server and click Add. They appear in the right hand column.
3. Type a name in the Group Name field, or click New to give the group a name.
4. Click Save. The group with the name underneath appears as an icon in the Operation window inside the group tab.

For the rest of the operating instructions please see the softcopy User Guide on the supplied CD or on our website [www.minicom.com](http://www.minicom.com) in the Support section.