

# KVM.net - PX

## Quick Installation Guide



[www.minicom.com](http://www.minicom.com)

### **International HQ**

Jerusalem, Israel

Tel: + 972 2 535 9666

[minicom@minicom.com](mailto:minicom@minicom.com)

### **North American HQ**

Linden, NJ, USA

Tel: + 1 908 486 2100

[info.usa@minicom.com](mailto:info.usa@minicom.com)

### **European HQ**

Dübendorf, Switzerland

Tel: + 41 44 823 8000

[info.europe@minicom.com](mailto:info.europe@minicom.com)

Technical support - [support@minicom.com](mailto:support@minicom.com)

## Introduction

KVM.net is a management solution for access to servers and network devices across geographic locations using TCP/IP. Users login via the KVM.net Web interface to connect to servers anywhere in the world.

KVM.net can include IP Access systems connected to multiple Target servers or PXs connected to individual servers or a combination of both.

### Pre-installation guidelines

Prepare a list of all system components. You will need this information to input into the system. The sheet supplied with the KVM.net User Guide contains a list of all the details you need. Use the side of the sheet for PX units. For extra sheets, photocopy them or print them from the softcopy files on the supplied CD.

The lists should include the following for each Target server:

- A unique and clearly identifiable name
- The operating system
- Non-default mouse settings. Default mouse settings do not need to be listed

### Note! For Windows XP, 2003 Server and Vista

For Windows XP, 2003 Server and Vista deactivate **Enhanced pointer precision**. From the **Control Panel** select **Printers and Other Hardware**. Click the **Mouse** icon. The Mouse Properties box appears. See Figure 1. Select the **Pointer Options** tab.

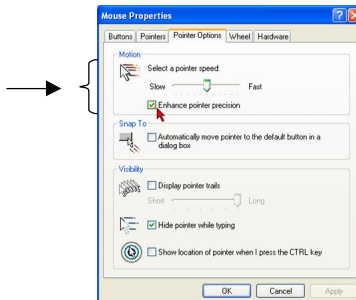


Figure 1 Pointer tab

Center the **Motion** section slider bar, and uncheck the **Enhanced pointer precision** box. Click OK to save changes.

## Connecting the PX

PXs receive power via the network cable. Ensure that your network switch supports PoE (Power Over Ethernet).

To connect the PX:

1. Connect the PX's built-in Keyboard, Video, and Mouse (KVM) connectors to the KVM ports of the Target server. See Figure 2 below.
2. Connect a network cable to the RJ45 port of the PX and to your PoE enabled network switch.

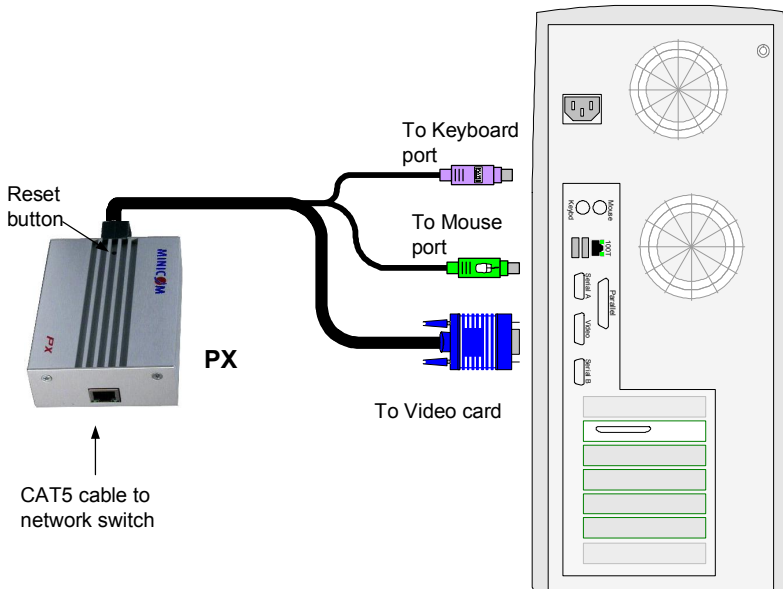


Figure 2 PX connections

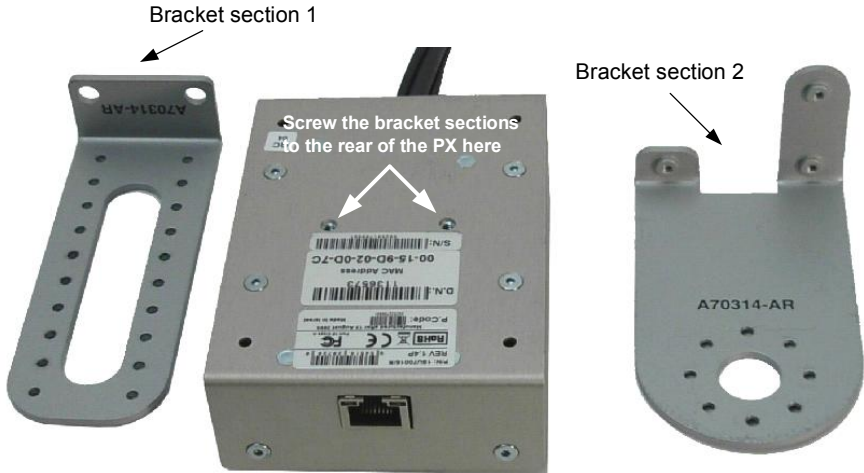
### PX LEDs

The PX has 2 green LEDs by the RJ45 connector. 1 shows the PX is connected to PoE network switch and the other shows that the Target server connected to this particular PX is being accessed.

### Connecting the PX to a rack

The PX comes with a versatile bracket in two sections see Figure 3. The bracket can be connected to the PX and then mounted on a rack in many different ways.

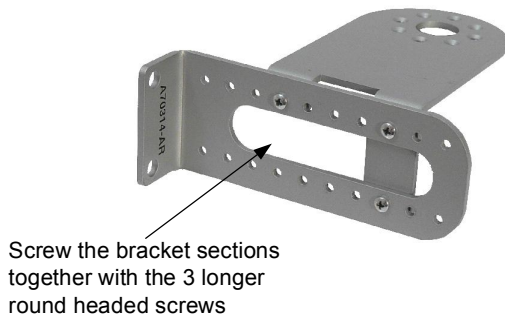
- Connect to the left or right side of the rack
- Connect the PX to the bracket at different angles
- Connect to different horizontal positions on the rack



**Figure 3 Rear of PX plus bracket sections**

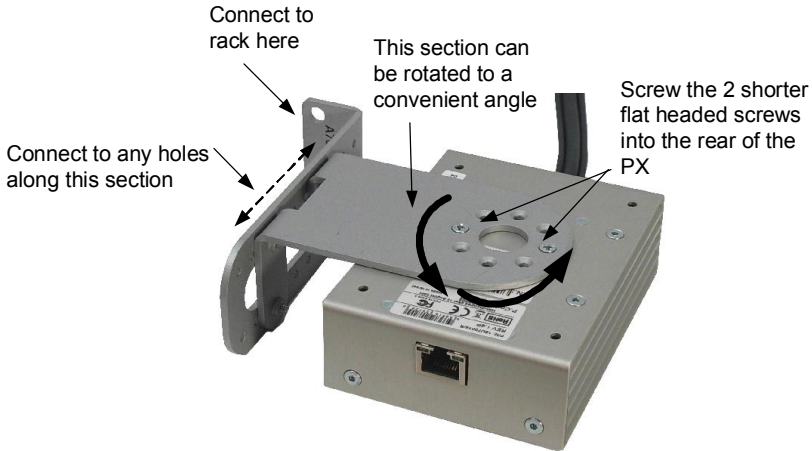
Use the screws provided to connect the bracket sections. There are 2 different types of screws. Connect the 2 parts of the brackets together with the 3 longer round headed screws. See Figure 6.

Connect section 2 of the bracket to the rear of the PX with the 2 shorter flat headed screws. **Note!** The screws fit snugly into the side of the bracket section 2 that is indented.

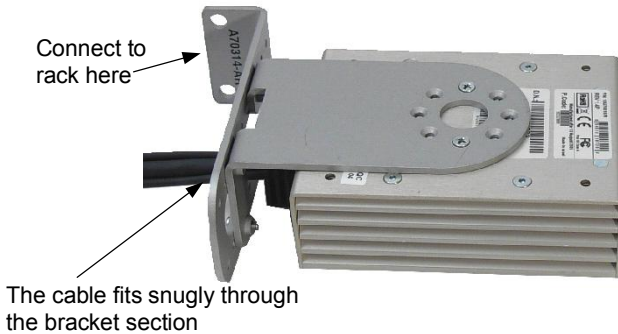


**Figure 4 Connecting the bracket section together**

The figures below illustrate 2 possible applications of the bracket.



**Figure 5 Bracket application 1**



**Figure 6 Bracket application 2**

## **Assigning an IP address for each PX**

To assign an IP address for each PX there should be a DHCP server on the network. Once a PX is powered on and connected to the network it automatically receives an assigned IP address from the DHCP server.

Where a DHCP server is currently unavailable, the PX boots with the static IP address of 192.168.0.155. The PX searches for a DHCP server every 5 minutes. Once a DHCP server becomes available the PX receives an IP address from it.

You see the assigned IP address when you access the KVM.net system. KVM.net automatically discovers all PXs connected to the same network segment. The PX MAC address appears on the underside of each PX.

## Assigning static IP addresses

Where there is no DHCP server on the network, assign IP addresses as follows:

1. Connect the PXs as described above, one at a time and open Internet Explorer.
2. Type <https://192.168.0.155/config> and login with user name **admin** and password **access** the PX Configuration page appears see Figure 7.

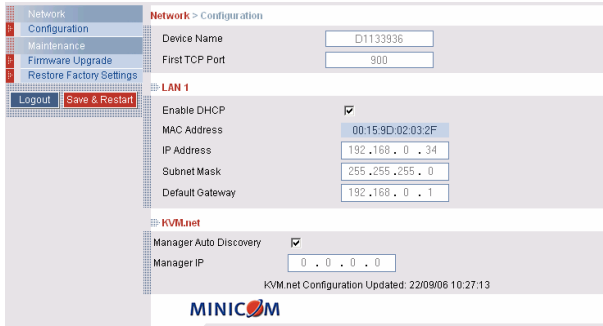


Figure 7 PX Configuration page

3. In the LAN 1 section, uncheck Enable DHCP and configure a static IP address for the PX, including Subnet Mask and Default Gateway.
4. Click Save & Restart.

**Tip!** Although KVM.net automatically discovers PXs connected to the same network segment, we recommend un-checking Manager Auto Discovery and configuring the Manager IP.

---

To complete the initial setup and configure the system, see the KVM.net User Guide.

---

## Restoring factory defaults

To restore a PX to the factory default settings, the PX must be connected to the PoE switch and a powered on computer.

Press the PX's Reset button (see Figure 2) for a few seconds. The Power LED blinks once and the PX reboots with the factory default settings.

### Booting PX in safe mode, if administrator's password is forgotten

1. Disconnect the network cable from the PX.
2. Press and hold the Reset button and re-connect the PX to the PoE switch.
3. Continue pressing the Reset button for 5 - 10 sec after re-connecting.

4. Release the Reset button. If a DHCP server is available, PX picks up an IP address from it. If there is no DHCP server, PX boots with static IP 192.168.2.155.
5. Type <http://192.168.2.155/config> (HTTP and not HTTPS)
6. Login with user name **admin** and password **SAFEmode** (case sensitive).
7. Restore PX default settings from the safe mode or perform a firmware upgrade if PX fails to boot with its normal firmware.

Contact Minicom Technical Support for special firmware for upgrading PX from the safe mode.

---

**PX - Technical specifications**

---

<b>Operating systems</b>	<b>Host Computer</b> DOS, Windows, Novell, Linux, SUN Solaris for PC <b>Client Computer</b> Windows: 2000, XP or 2003 Server. With IE 6.0 or 7.0
<b>Resolution</b>	<b>Host Computer</b> Up to 1600x1200 @85Hz <b>Client Computer</b> Recommended resolution should be higher than resolution on local computer
<b>Video and Mouse Synchronization</b>	Both auto and manual modes
<b>Connections</b>	Ethernet - RJ45 - 10/100 Mbit/sec autosensing Computer - Built-in cable - Screen HDD15, Keyboard/Mouse MiniDIN6
<b>Dimensions</b>	31H X 80D X 105Wmm 1.2 X 3.15 X 4.13 in
<b>Power supply</b>	PoE 4.5W
<b>Maximum current consumption</b>	Less than 135mA
<b>Operating temp.</b>	0°C to 40°C / 32°F to 104°F

---